

# CITY OF PEEKSKILL Natural Resources Inventory

**DRAFT**  
Sea Level Rise  
October 2022

### LEGEND

- City of Peekskill
- County Boundary
- Town/Village Boundary
- Railroad
- Major Roads
- Local Roads
- Water Body
- Hudson River Mean High Water
- Sea Level Inundation**
- Inundation at 30"
- Inundation at 60"
- Inundation at 72"

The Hudson River Flood Decision Tool, developed by Columbia University, provides an estimate of inundation at various scenarios of predicted Sea Level Rise. This map illustrates the following Sea Level Rise scenarios which are comparable to the NYSDEC High Projections:

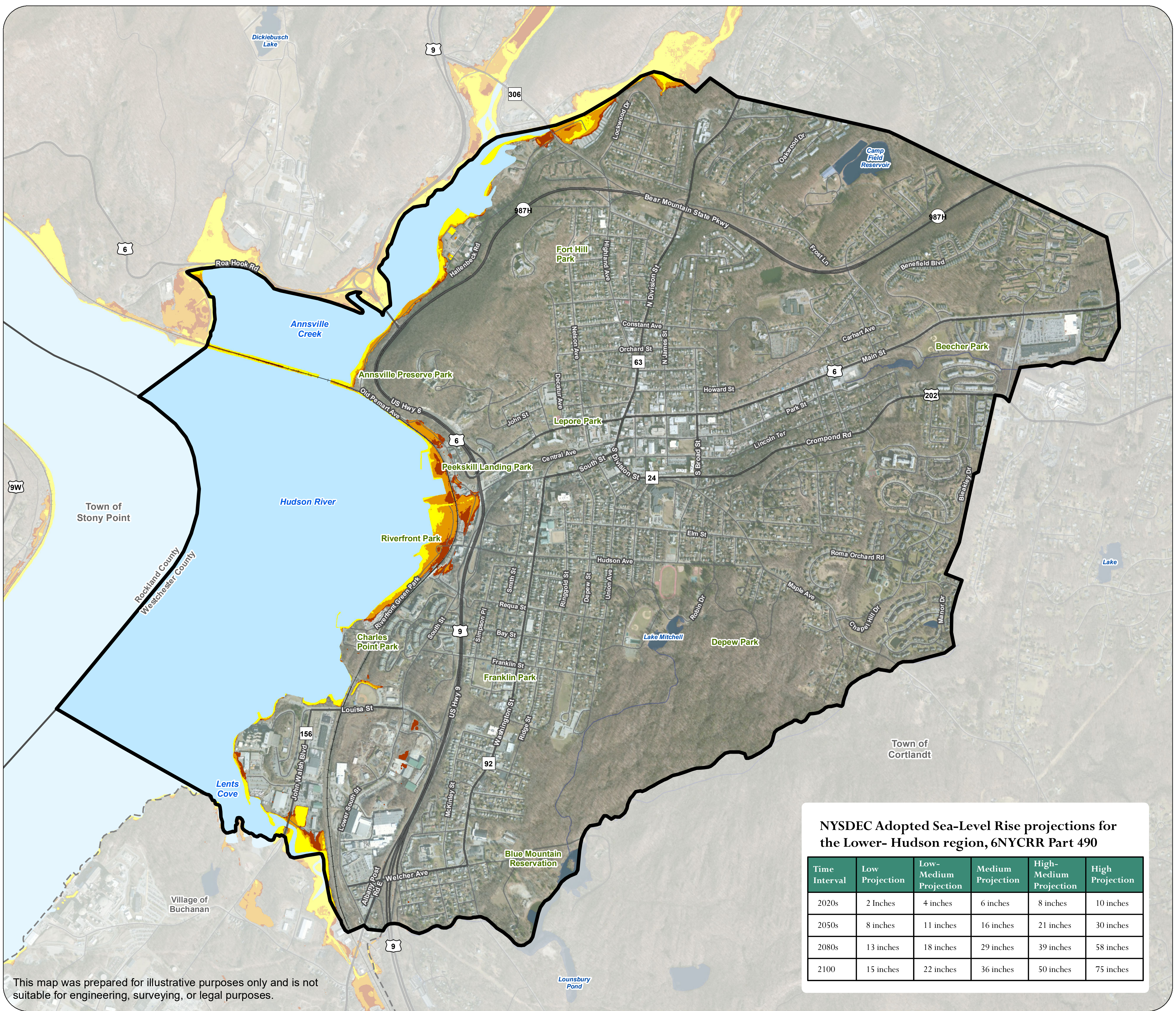
- 30" Sea Level Rise (2050s)
- 60" Sea Level Rise (2080s)
- 72" Sea Level Rise (2100)

**NYSDEC Adopted Sea-Level Rise projections for the Lower- Hudson region, 6NYCRR Part 490**

Time Interval	Low Projection	Low-Medium Projection	Medium Projection	High-Medium Projection	High Projection
2020s	2 Inches	4 inches	6 inches	8 inches	10 inches
2050s	8 inches	11 inches	16 inches	21 inches	30 inches
2080s	13 inches	18 inches	29 inches	39 inches	58 inches
2100	15 inches	22 inches	36 inches	50 inches	75 inches



0 750 1,500 Feet



This map was prepared for illustrative purposes only and is not suitable for engineering, surveying, or legal purposes.