



CITY OF PEEKSKILL

Natural Resources

Inventory

DRAFT
Existing Land Use

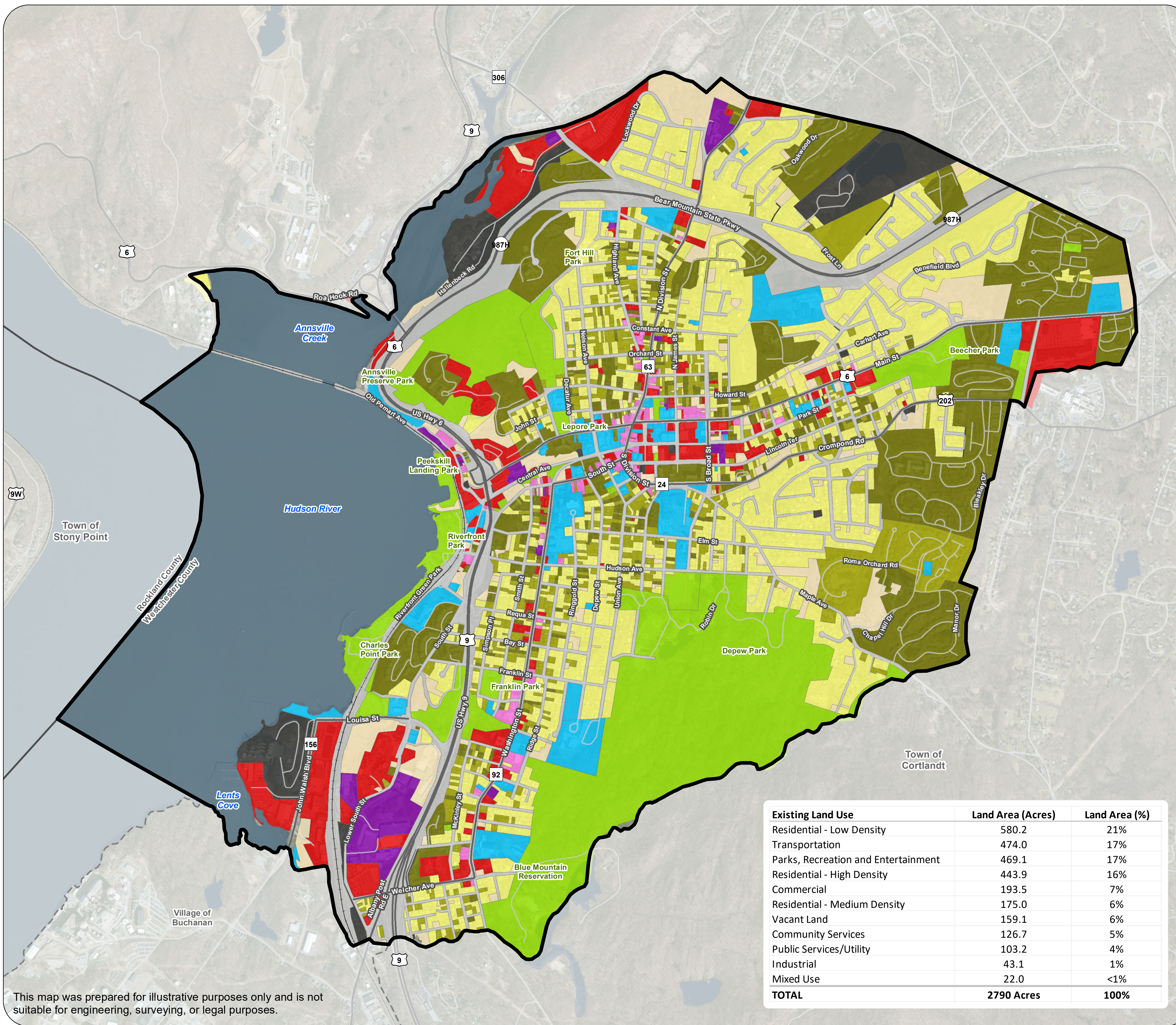
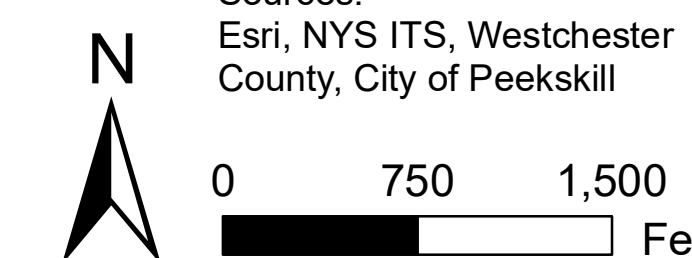
October 2022

LEGEND

- City of Peekskill
 - County Boundary
 - Town/Village Boundary
 - Railroad
 - Major Roads
 - Local Roads
 - Water Body
- Existing Land Use**
- Commercial
 - Community Services
 - Industrial
 - Mixed Use
 - Public Services/Utility
 - Parks, Recreation & Entertainment
 - Residential - Low Density
 - Residential - Medium Density
 - Residential - High Density
 - Transportation
 - Vacant Land

Existing Land Use information derived from assessed land use codes in 2022 Tax Assessment data as well as through input from the City.

Existing Land Use	Land Area (Acres)	Land Area (%)
Residential - Low Density	580.2	21%
Transportation	474.0	17%
Parks, Recreation and Entertainment	469.1	17%
Residential - High Density	443.9	16%
Commercial	193.5	7%
Residential - Medium Density	175.0	6%
Vacant Land	159.1	6%
Community Services	126.7	5%
Public Services/Utility	103.2	4%
Industrial	43.1	1%
Mixed Use	22.0	<1%
TOTAL	2790 Acres	100%



This map was prepared for illustrative purposes only and is not suitable for engineering, surveying, or legal purposes.