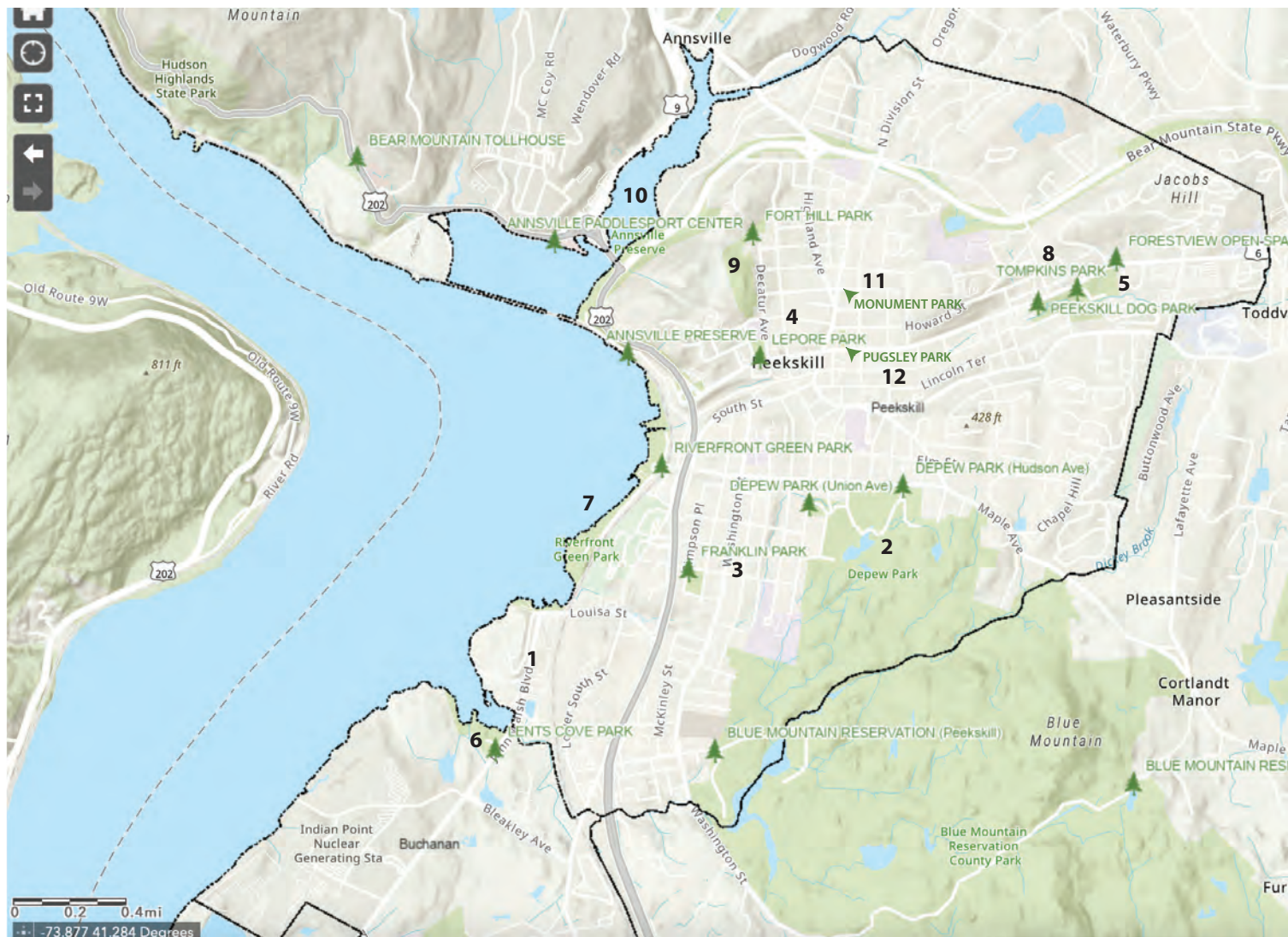


City of Peekskill Parks and Recreation Map



Significant Peekskill Parks and Recreation Areas

- 1 **Charles Point Park**, Fleischmann Pier at Charles Point provides an expansive view of Peekskill Bay on up to Bear Mountain, and the Bear Mountain Bridge.
- 2 **Depew Park**, Depew Park is home to the City Recreation Office. You can enjoy a swim in Veterans Memorial Pool or walk on the many wooded trails.
- 3 **Franklin Park**, Franklin Park is located on Franklin Street between Smith Street and Simpson Place.
- 4 **Lepore Park**, Lepore Park is located on Main Street in Peekskill.
- 5 **Peekskill Dog Park**, The Peekskill Dog Park is located at 1795 Main Street and is open from dawn to dusk.
- 6 **Peekskill Stadium**, Peekskill Stadium on Louisa Street is a baseball field complex overlooking the Hudson River.
- 7 **Riverfront Green Park, Including Peekskill Landing Park**, With a backdrop of the Hudson Highlands, kayakers, swans and occasional barges, this is an ideal spot to river watch, enjoy a picnic or bring the kids to a playground.
- 8 **Tompkins Park**, Tompkins Park is home to the Lapolla Little League. The baseball field is accessible from Main Street (Route 6)
- 9 **Fort Hill Park**, lies just north of Oaksie Elementary School on Decatur Avenue. The site has links to a history linked with the American Revolution
- 10 **Annsville Preserve**, a shoreline park and wetland area at the mouth of Annesville Creek.
- 11 **Monument Park**
- 12 **Pugsley Park**



The Peekskill Conservation Advisory Council (CAC) is producing this Inventory to provide a baseline of information for helping town officials, developers, and residents make informed and environmentally sound land use decisions.

This map is for reference and planning purposes only and should not be used for legal determinations or navigation.

Data Sources

Source: Mapping Westchester County
<https://giswww.westchestergov.com/GISMap/>

This Map was created 2022 for the City of Peekskill Conservation Advisory Council.