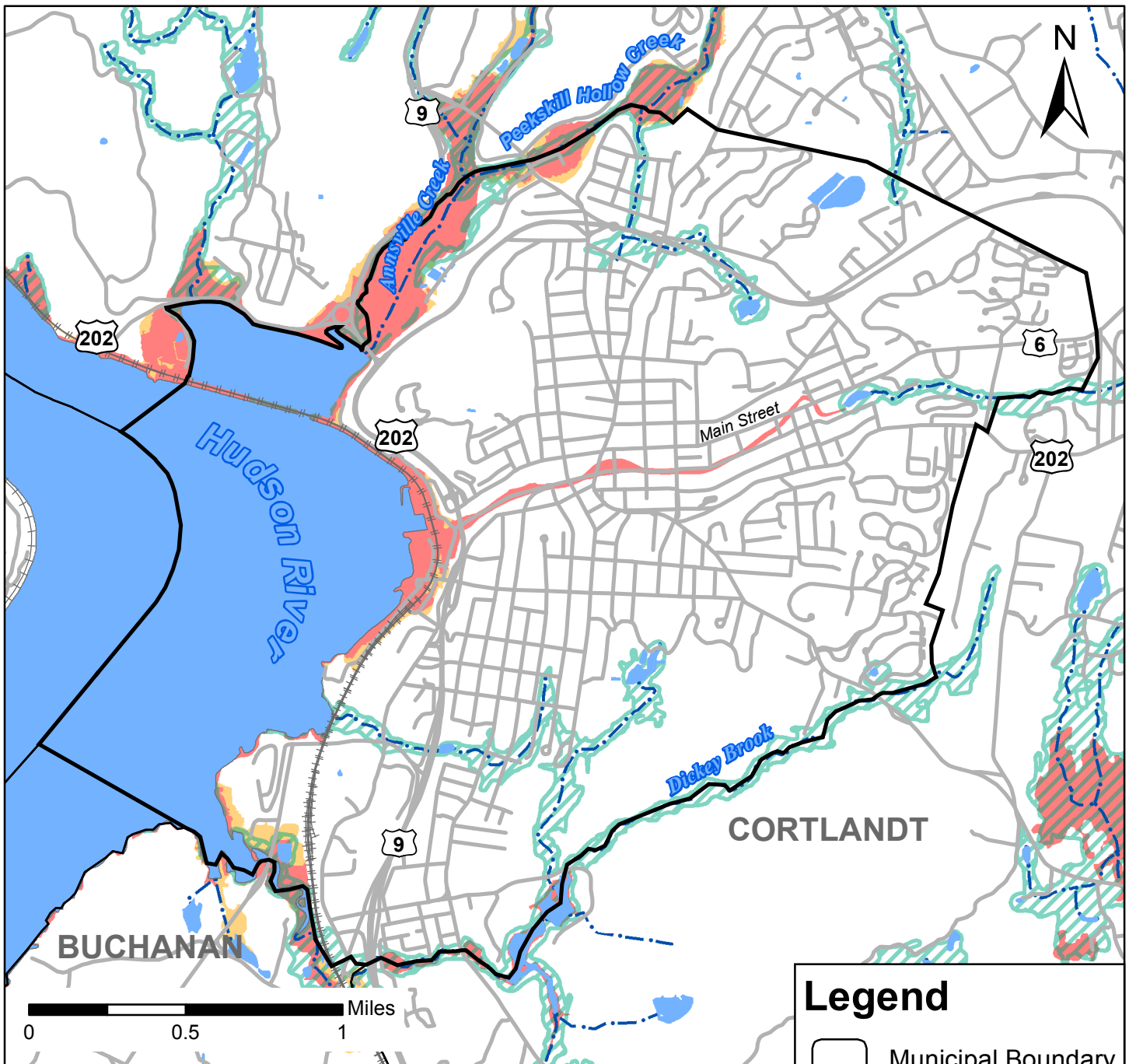


Figure 4: Streams and Floodplains in the City of Peekskill



This map shows streams, flood hazard areas, riparian buffers, waterbodies, and shoreline types in the City of Peekskill, Westchester County. This map was produced as part of a habitat summary for the city and is not intended for regulatory purposes. For more information, please contact NYSDEC's Hudson River Estuary Program Conservation and Land Use Specialist Nate Nardi-Cyrus at (845)256-3062 or nate.nardi-cyrus@dec.ny.gov. <http://www.dec.ny.gov/lands/5094.html>
Data also available for interactive viewing at www.dec.ny.gov/lands/112137.html

Data Sources:

NYSDEC and USGS: NHD streams waterbodies (2008), New York Natural Heritage Program: riparian buffers (2018), Federal Emergency Management Agency: flood hazard zones (2016), NYS Office of Information Technology Services: roads, railroads, and municipal boundaries (2018). Map created 2018.

Legend

- Municipal Boundary
- NYS Rail Lines
- Road
- Waterbody
- Stream
- Riparian Buffers

Flood Hazard Areas

- 1% (100 year)
- 0.2% (500 year)



Department of Environmental Conservation



Cornell University