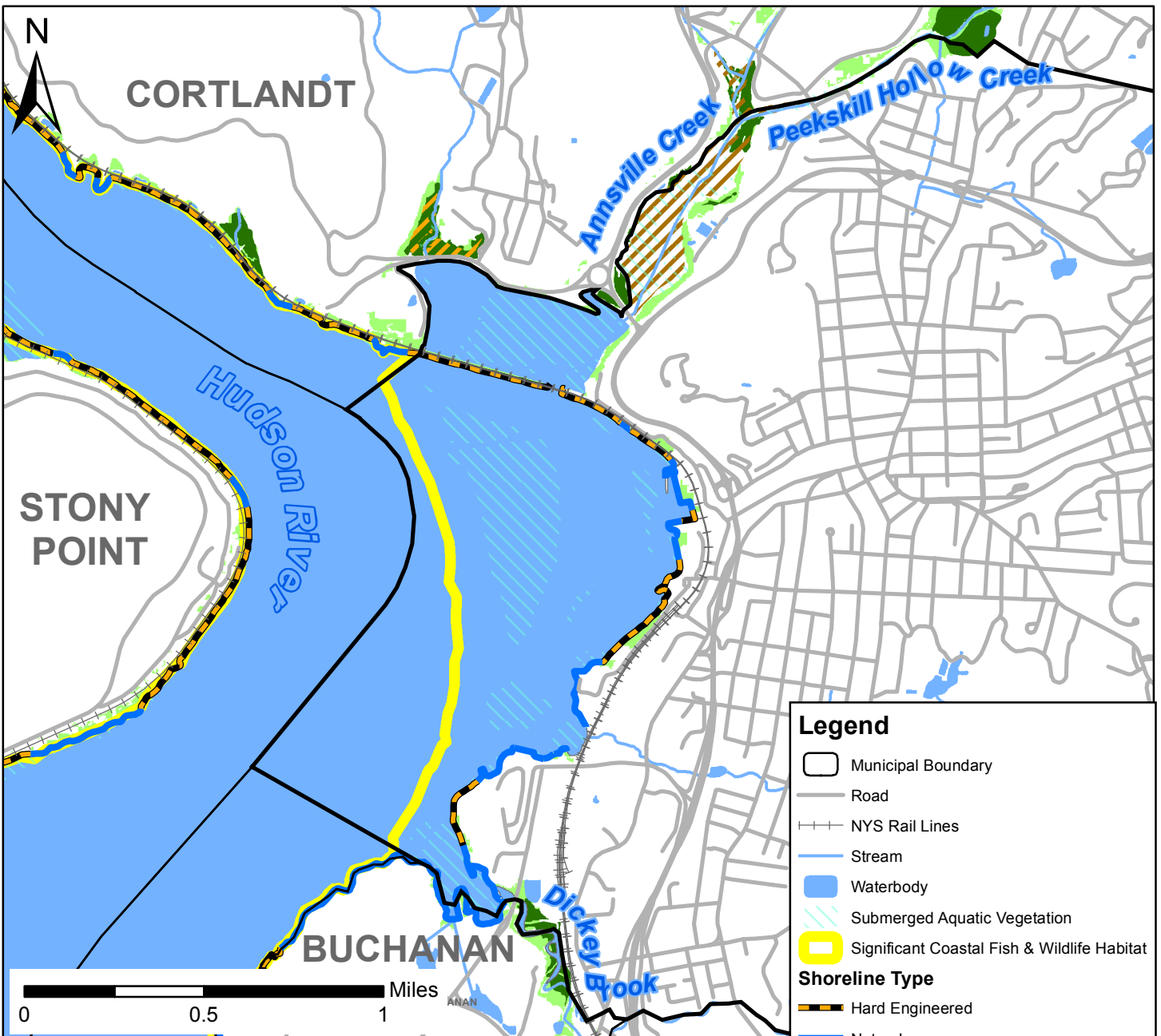


Figure 5: Hudson River Coastal Habitats in the City of Peekskill



This map shows Hudson River coastal habitats and general shoreline type in the City of Peekskill, Westchester County. It is based on existing information about significant ecosystems and vegetated shallows. Potential tidal wetland pathways show areas along the Hudson, and its tributaries, where tidal wetlands may move by 2100 as sea level rises based on a study by Scenic Hudson. This map was produced as part of a habitat summary for the city and is not intended for regulatory purposes. For more information, please contact NYSDEC's Hudson River Estuary Program Conservation and Land Use Specialist Nate Nardi-Cyrus at (845)256-3062 or nate.nardi-cyrus@dec.ny.gov. <http://www.dec.ny.gov/lands/5094.html>

Data also available for interactive viewing at www.dec.ny.gov/lands/112137.html

Data Sources:

Hudson River National Estuarine Research Reserve and NYSDEC: tidal wetlands (2011), general shoreline type (2005), and documented SAV (2014), NYS Department of State: significant coastal fish and wildlife habitats (2012), Scenic Hudson: potential future tidal wetlands (2015), NYSDEC and USGS: NHD streams waterbodies (2008), NYS Office of InformationTechnology Services: roads, railroads, and municipal boundaries (2018). Map created 2018.

