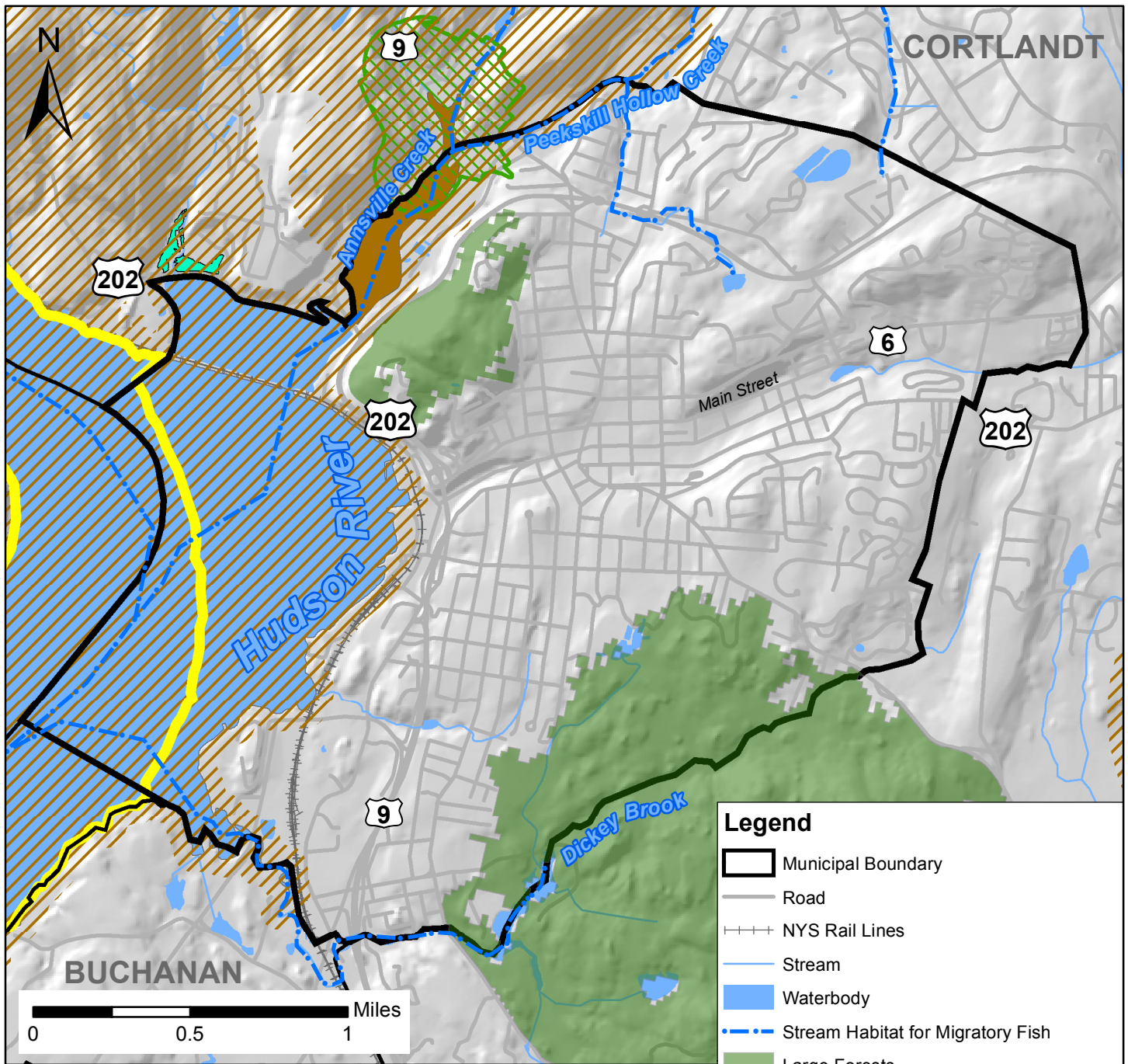


Figure 2: Significant Ecological Features in the City of Peekskill



This map shows the most important known ecological features in the City of Peekskill, Westchester County, based on limited information. This map was produced as part of a habitat summary for the city. For more information, please contact NYSDEC's Hudson River Estuary Program Conservation and Land Use Specialist Nate Nardi-Cyrus at (845)256-3026 or at nate.nardi-cyrus@dec.ny.gov. <http://www.dec.ny.gov/lands/5094.html>

Data also available for interactive viewing at www.dec.ny.gov/lands/112137.html

Data Sources:

NYS Department of State: Significant Coastal Fish and Wildlife Habitats (2012), New York Natural Heritage Program (NYNHP): Known Important Areas (2013), Stream habitat for migratory fishes (2011), Significant natural communities (2014), NYSDEC: National Hydrography Dataset streams and waterbodies (2017) NYS Office of Information Technology Services: roads, railroads, and municipal boundaries (2018), Cornell Department of Natural Resources: forest blocks (2015 - based on 2010 NOAA CCAP land cover). Map created 2018.

Legend

- Municipal Boundary
- Road
- NYS Rail Lines
- Stream
- Waterbody
- Stream Habitat for Migratory Fish
- Large Forests
- Significant Coastal Fish & Wildlife Habitat

Known important areas for:

- Rare Animals
- Rare Plants

Significant natural communities:

- Brackish intertidal mudflats
- Brackish tidal marsh

