

CITY OF PEEKSKILL Natural Resources Inventory

Public Information Session

February 7, 2023

6:00 PM Via Zoom



A scenic view of a river or lake with reeds and trees under a blue sky with white clouds. The text is overlaid on the center of the image.

WELCOME & INTRODUCTIONS

[WHO IS INVOLVED]

City of Peekskill - Atticus Lanigan, Planner

Conservation Advisory Committee

- Elaine Caccoma
- Lise Prown
- Kay Barthelmes
- Christopher Barrett
- Marie Inserra
- Janine Melillo
- Carmina D'Angelo
- Amy Wiggins
- Courtney Williams

Consultant Team:

M.J. Engineering & Land Surveying, P.C.

- Jaclyn Hakes
- Sarah Starke Hesse
- Jesse McCaughey



Engineering and
Land Surveying, P.C.



[AGENDA]

1

Welcome &
Introductions

2

Webinar
"How To"

3

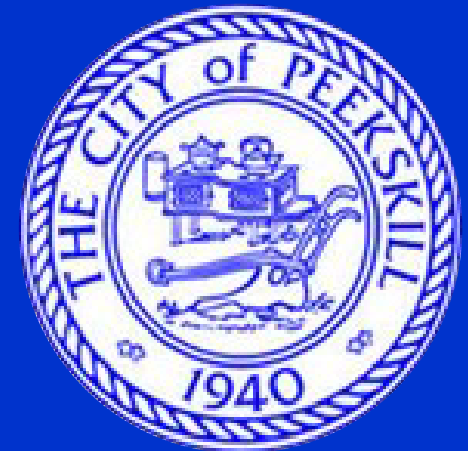
Project
Overview

4

NRI Document &
Mapping
Highlights

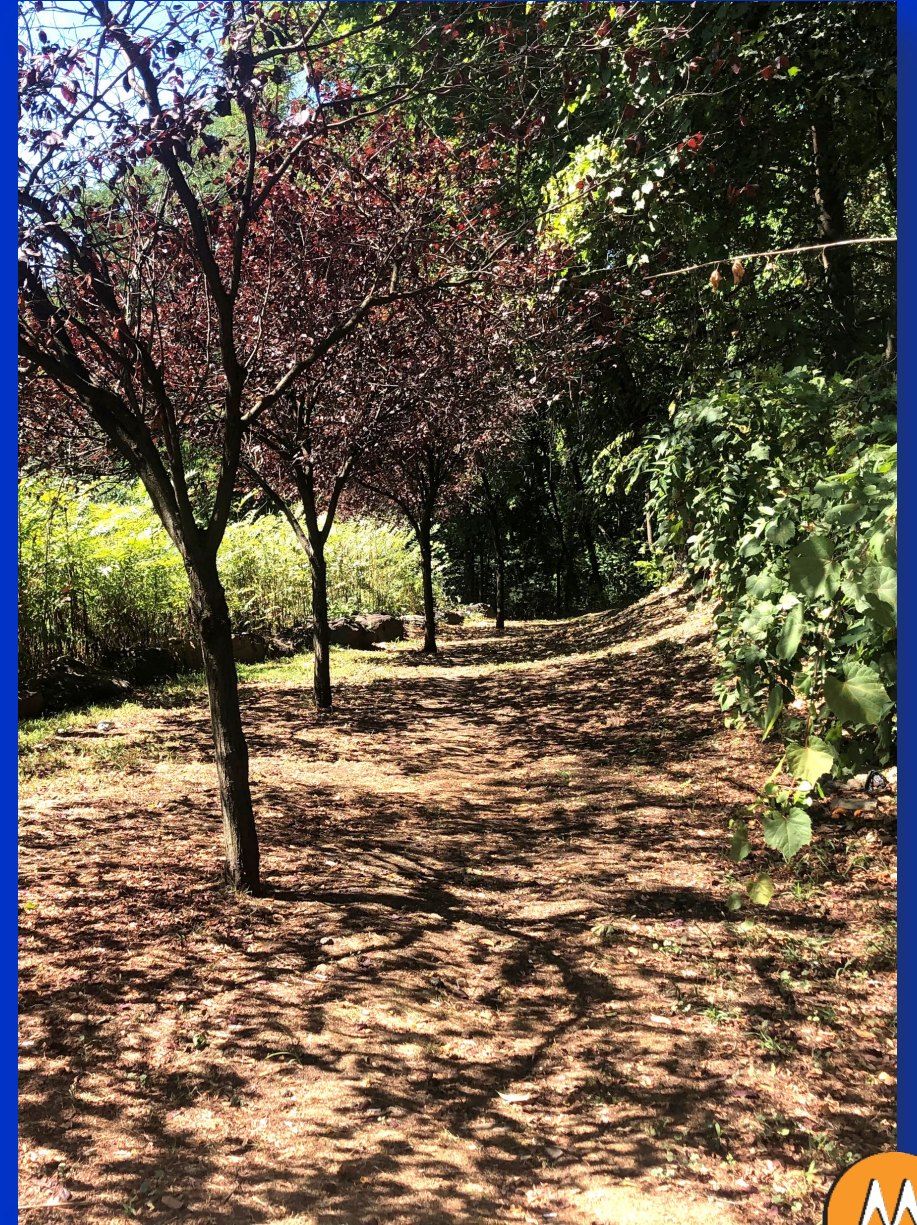
5

Q & A



[PARTICIPANT POLL]

Getting to know you...

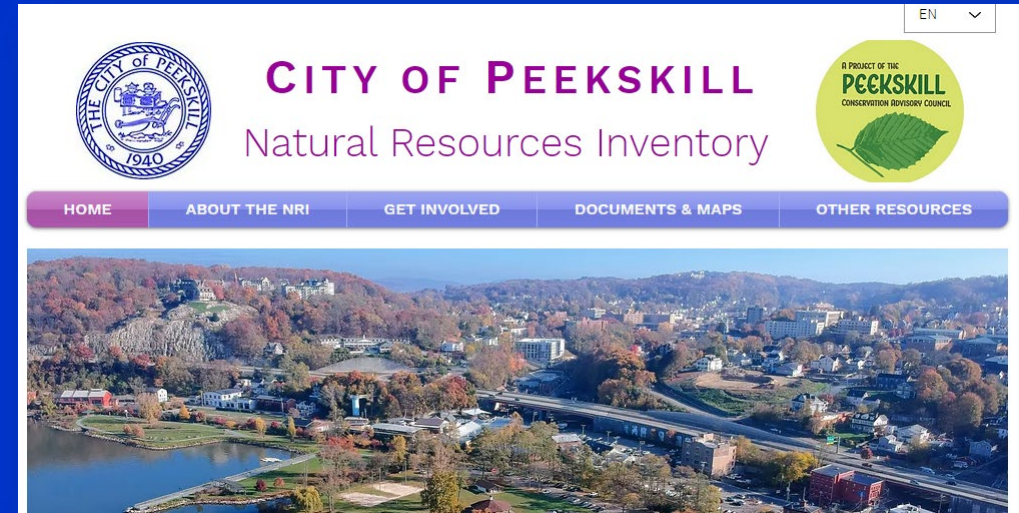




WEBINAR
"HOW TO"

[WEBINAR “HOW TO”]

- There will be several interactive polls during the presentation – please participate!
- We will break to address questions at the end of the presentation
- To post a question, utilize the “Q & A” function in your Zoom Webinar panel
- Use the “Raise Hand” feature
 - If on a telephone:
 - *9 to raise hand
 - *6 to mute/unmute



The presentation, as well as a recording of the webinar will be posted on the project website at:

www.PeeckskillNRI.com

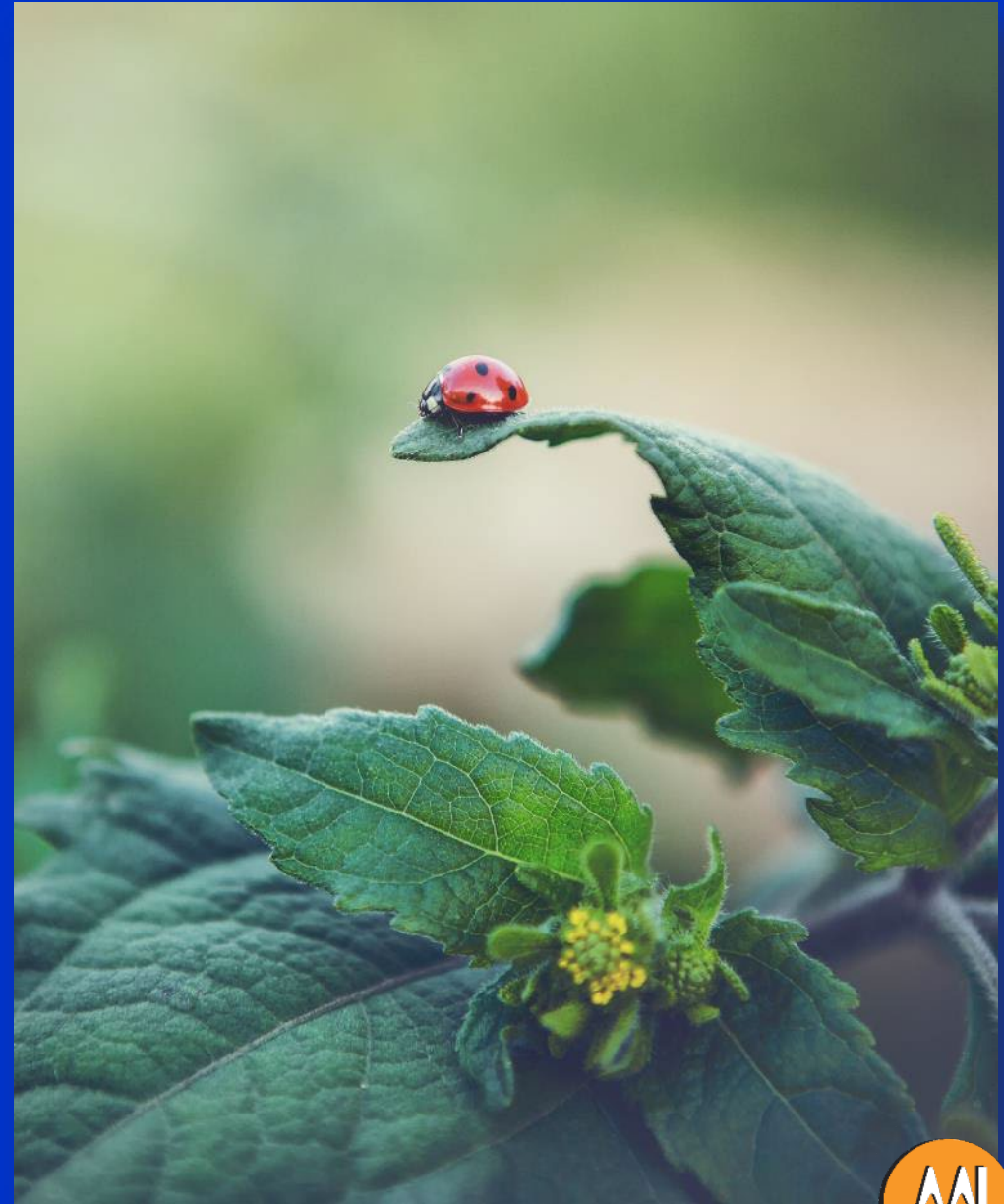


A scenic view of a river or lake with reeds and trees under a blue sky with white clouds. The text "PROJECT OVERVIEW" is overlaid in the center in a bold blue font.

PROJECT OVERVIEW

[What is an NRI?]

- **Narrative & Map Series**
- **Identifies the City's Existing Environmental Resources & Constraints**
 - Wildlife Habitats
 - Flooding & Resiliency
 - Water Resources
 - Land Resources
- **Resource to inform future planning and land use**



[PROJECT OVERVIEW]

- **What goes into an NRI?**
 - Analysis of Existing Resources
 - Resource Mapping

- **What is not in an NRI?**
 - Zoning/Land Use Recommendations
 - Open space and recreation recommendations

Creating a Natural Resources Inventory

A Guide for Communities in the Hudson River Estuary Watershed



Cornell University



Hudson River Estuary Program
A Program of the New York State
Department of Environmental Conservation




[PROJECT OVERVIEW]

- **NRI Future Applicability –**
 - Inform Community of Existing Environmental Resources
 - Inform Planning/ Development Review
 - Create Watershed Assessment Plan
 - Create Rec & Open Space Plan
 - Local Waterfront Revitalization Plan
 - Designate Critical Environmental Area (CEA)



Photo Credit: Atticus Lanigan



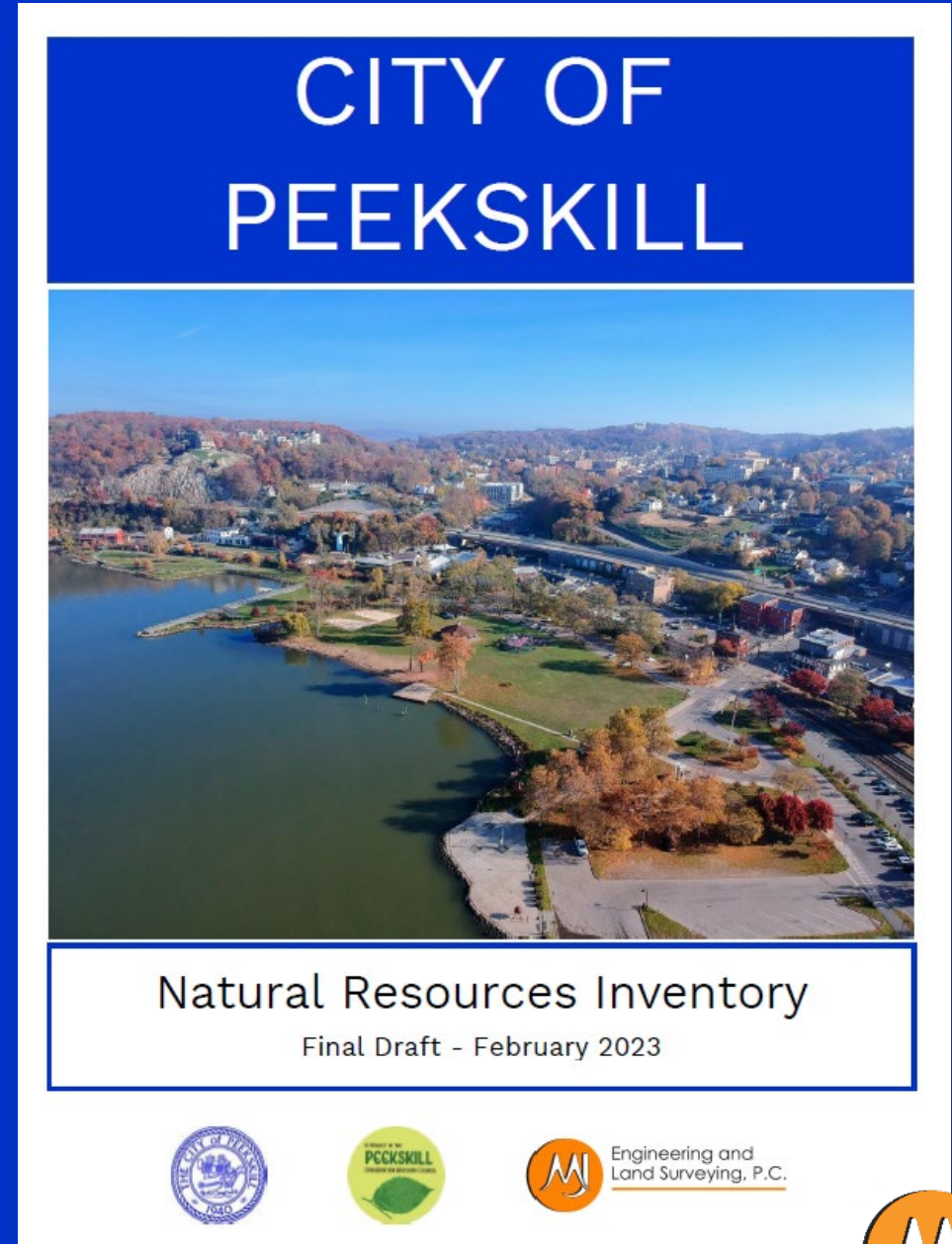


NRI DOCUMENT & MAPPING HIGHLIGHTS

[NRI DOCUMENT OVERVIEW]

NRI Document Sections

- Introduction & City Background
- Reference Mapping
- Geology & Soils
- Land Use
- Water Resources
- Habitats & Wildlife
- Climate
- Cultural Resources
- Application of the NRI



[NRI MAPPING OVERVIEW]

Mapping from variety of sources:

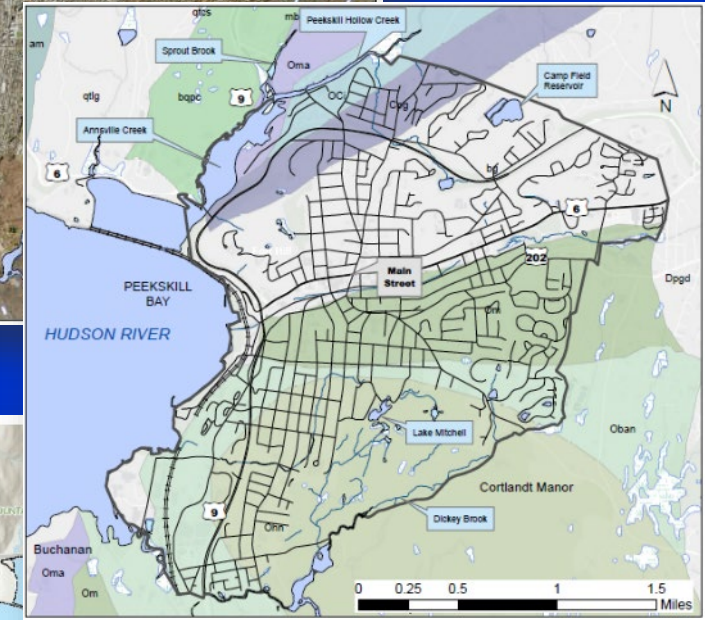
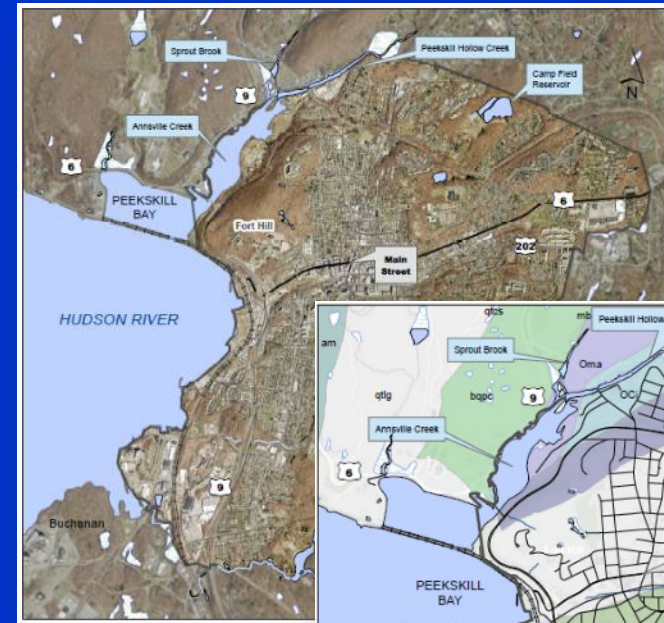
- City of Peekskill
- City of Peekskill CAC
- NYSDEC Habitat Summary
- MJ Mapping



NRI MAPPING HIGHLIGHTS

NRI Mapping

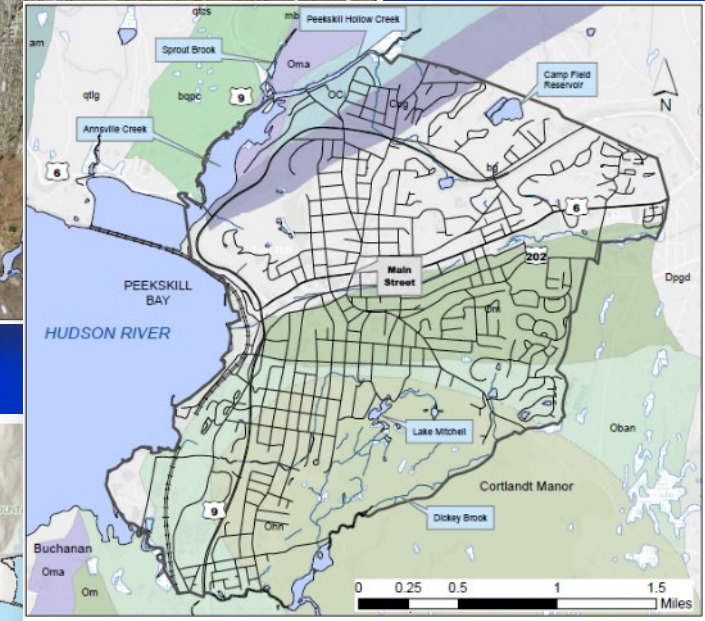
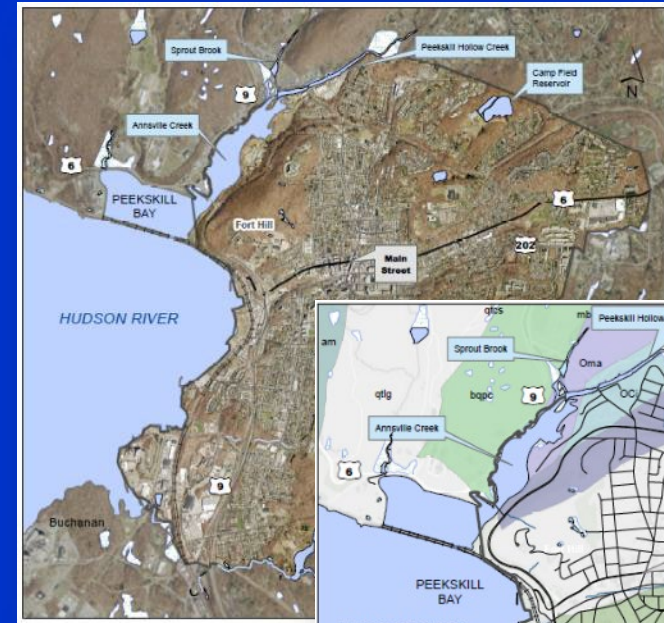
- Base map
- Aerial
- Topography
- Slopes
- Geology
- Soils
- Existing Land Use
- Existing Zoning
- Drinking Water
- Streams & Flood Zones
- Wetlands
- Watersheds
- Biodiversity Areas
- Habitat & Ecological Features
- Forests
- Sea Level Rise
- Historic Resources
- Parks



NRI MAPPING HIGHLIGHTS

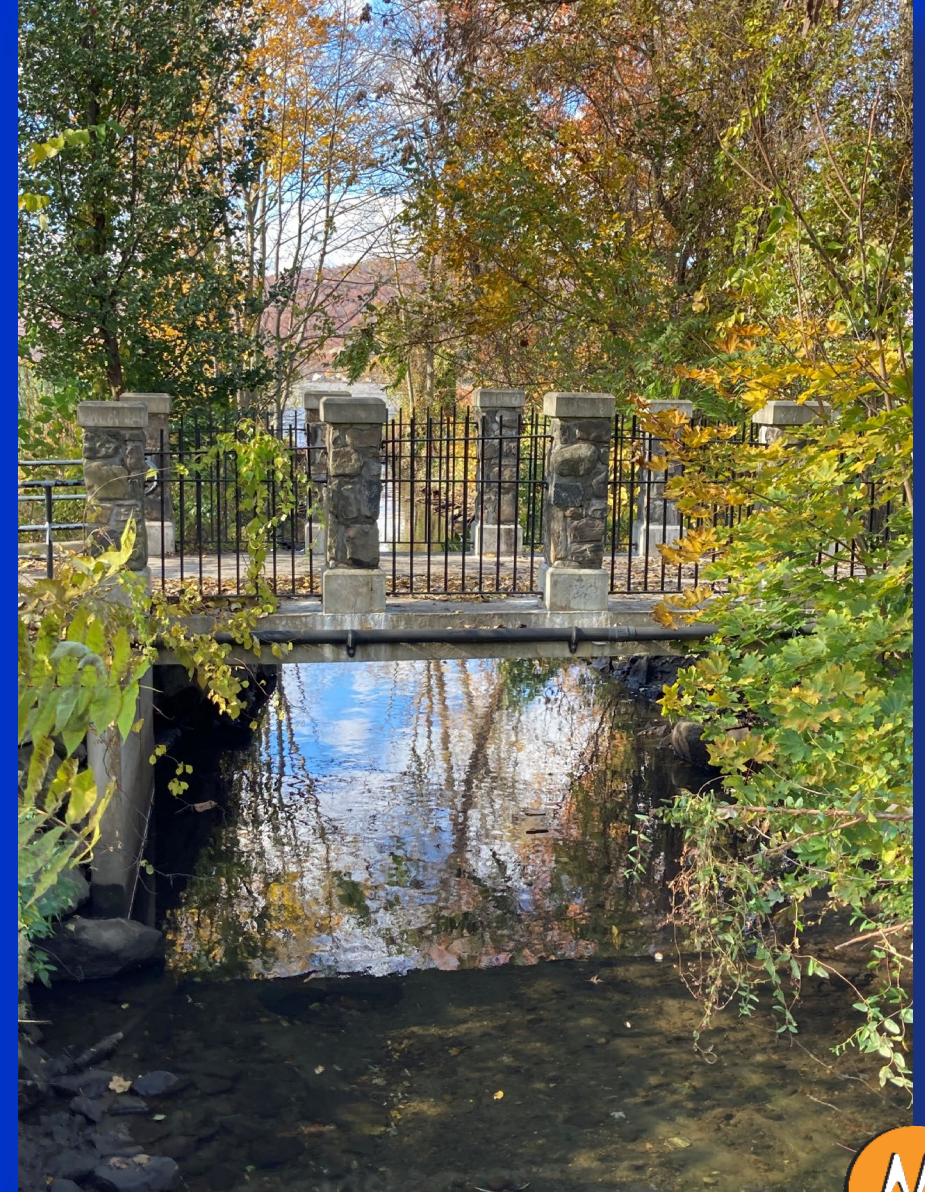
NRI Mapping - Highlights

- Base map
- Aerial
- Topography
- **Slopes**
- Geology
- **Soils**
- **Existing Land Use**
- Existing Zoning
- Drinking Water
- **Streams & Flood Zones**
- **Wetlands**
- **Watersheds**
- Biodiversity Areas
- **Habitat & Ecological Features**
- Forests
- **Sea Level Rise**
- Historic Resources
- Parks



[PARTICIPANT POLL]

- Please go to pollev.com/mjplanning518
- Text “MJPlanning518” to 37607
- Scan the QR code below

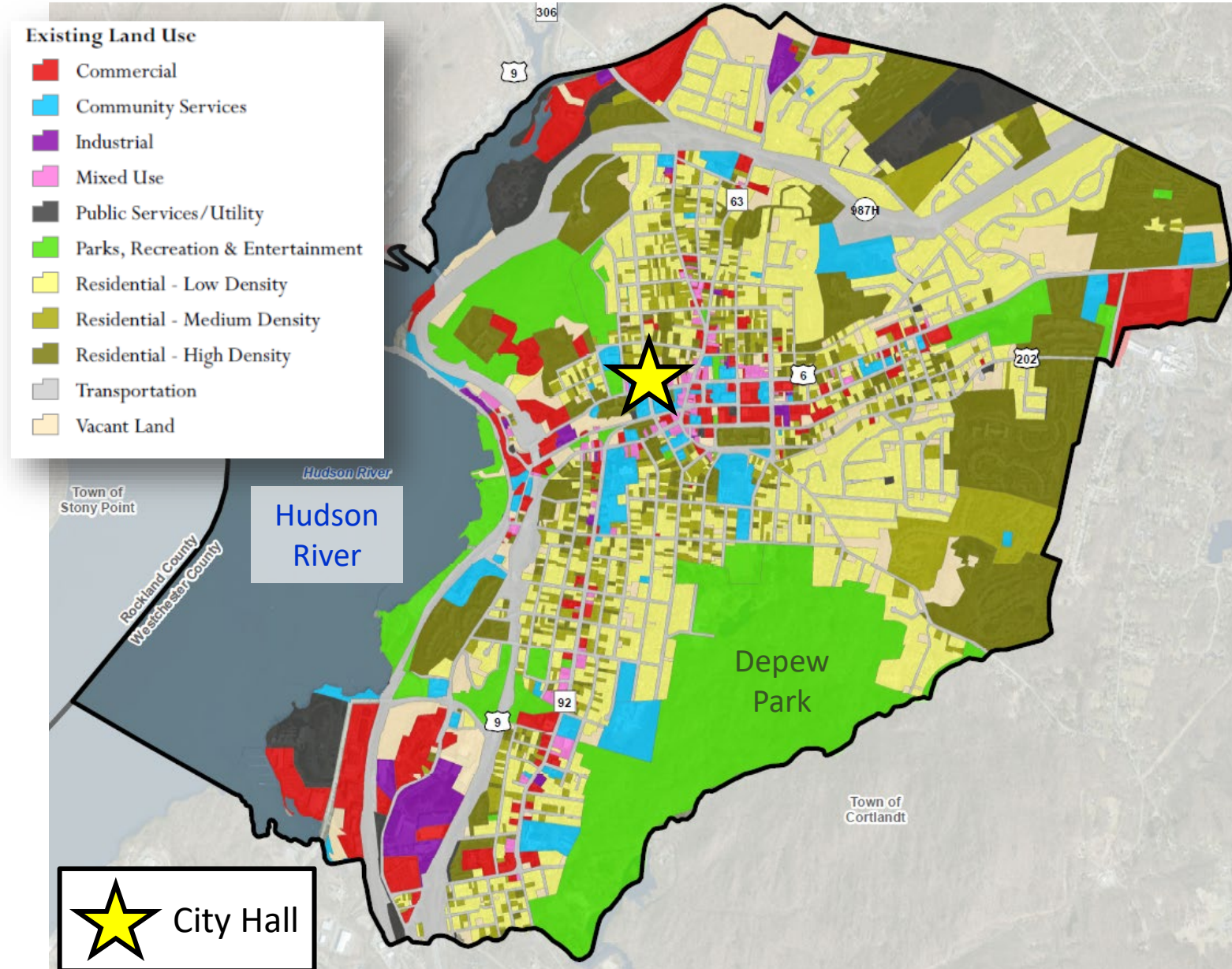


In one word, how do you interact with the natural resources in your City? You can respond more than once. (ex. fishing, boating, hiking, birdwatching, etc)

NRI MAPPING HIGHLIGHTS

Existing Land Use

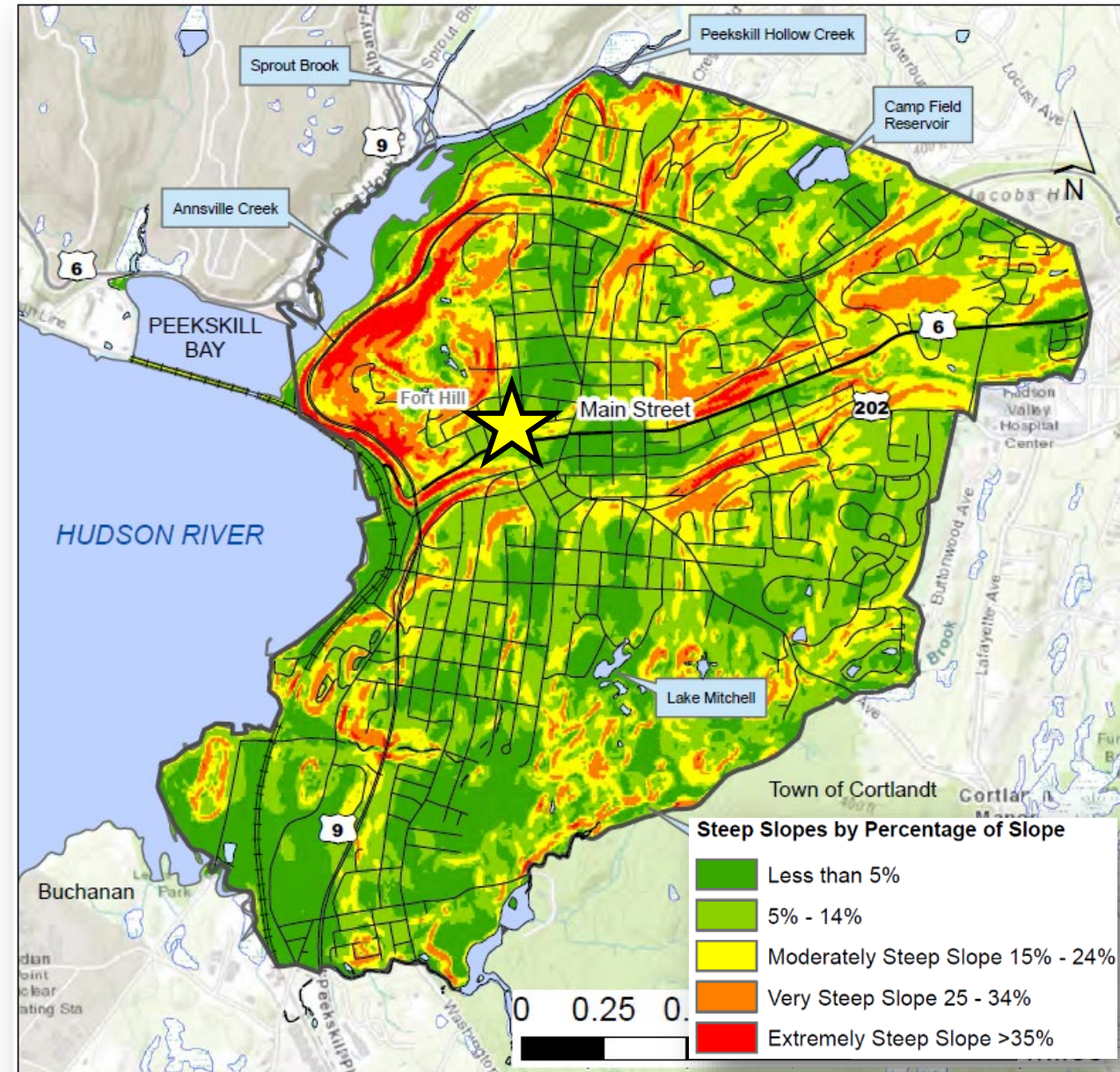
- Classified from assessment codes
- Primarily Residential (43% Land Area)
 - Low Density (21%)
 - High Density (16%)
 - Med Density (6%)
- Parks, Recreation & Entertainment (17%)
- Transportation (17%)



[NRI MAPPING HIGHLIGHTS]

Steep Slopes

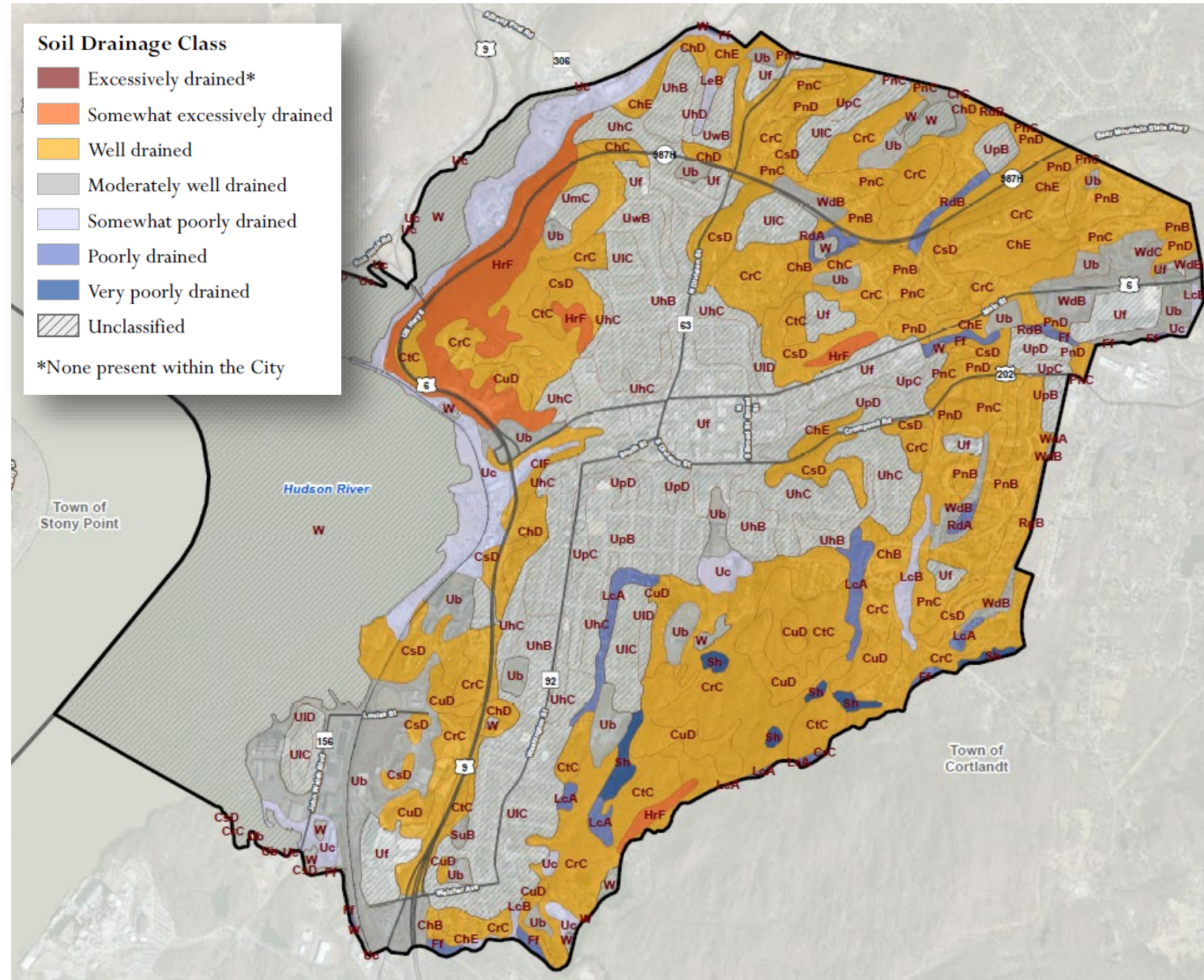
- Areas of land grade $> 15\%$ (shown in yellow, orange, red)
- Primarily in Fort Hill, North of Main Street, Charles Point, Depew Park
- 781 acres of steep slopes in Peekskill (28% Land Area)



NRI MAPPING HIGHLIGHTS

Soils

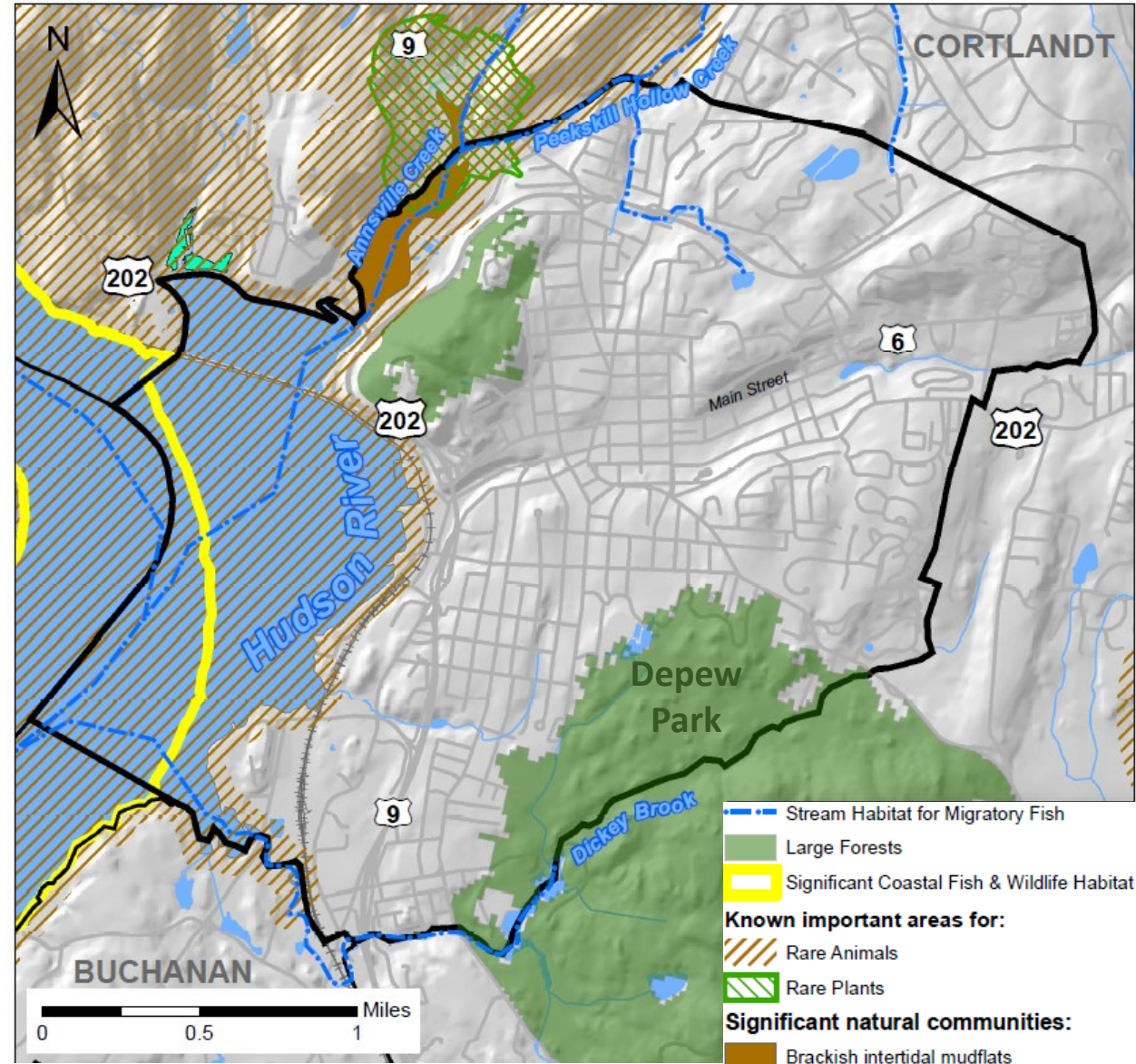
- Source: USDA Soil Survey
- Identifies 'units' of soil with similar properties
- Drainage properties can influence development, wetlands, etc.
- Soils in Peekskill primarily well drained



[NRI MAPPING HIGHLIGHTS]

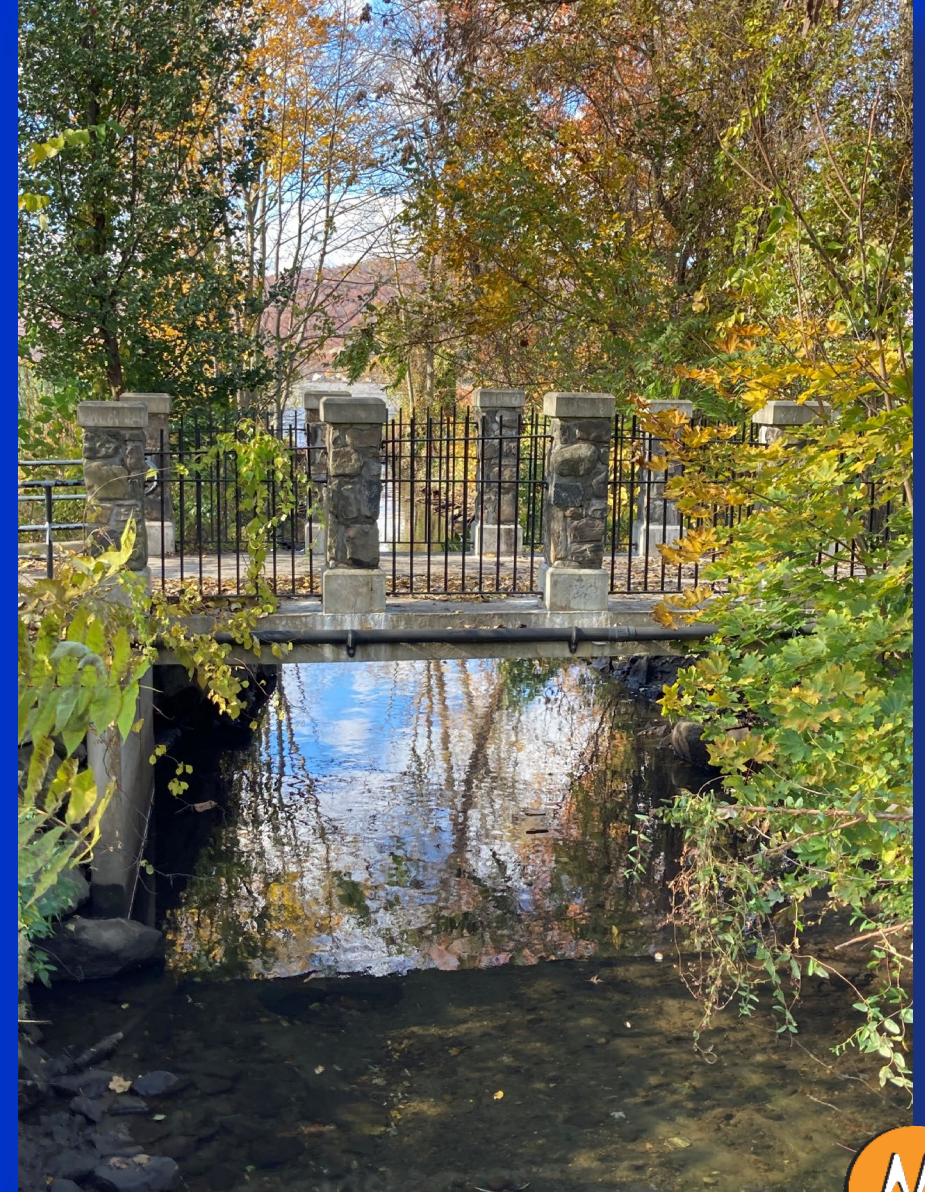
Ecological Features

- Large Forests – Depew & Fort Hill Parks
- Coastal Fish & Wildlife Habitat (Hudson Highlands)
- Areas of Rare Plants & Animals
- Significant Natural Communities
 - Intertidal Mudflats



[PARTICIPANT POLL]

- Please go to pollev.com/mjplanning518
- Text “MJPlanning518” to 37607
- Scan the QR code below



What are the most important land resources to you? Select all the apply.

Biodiversity

Forests

Parks & Recreation

Soils

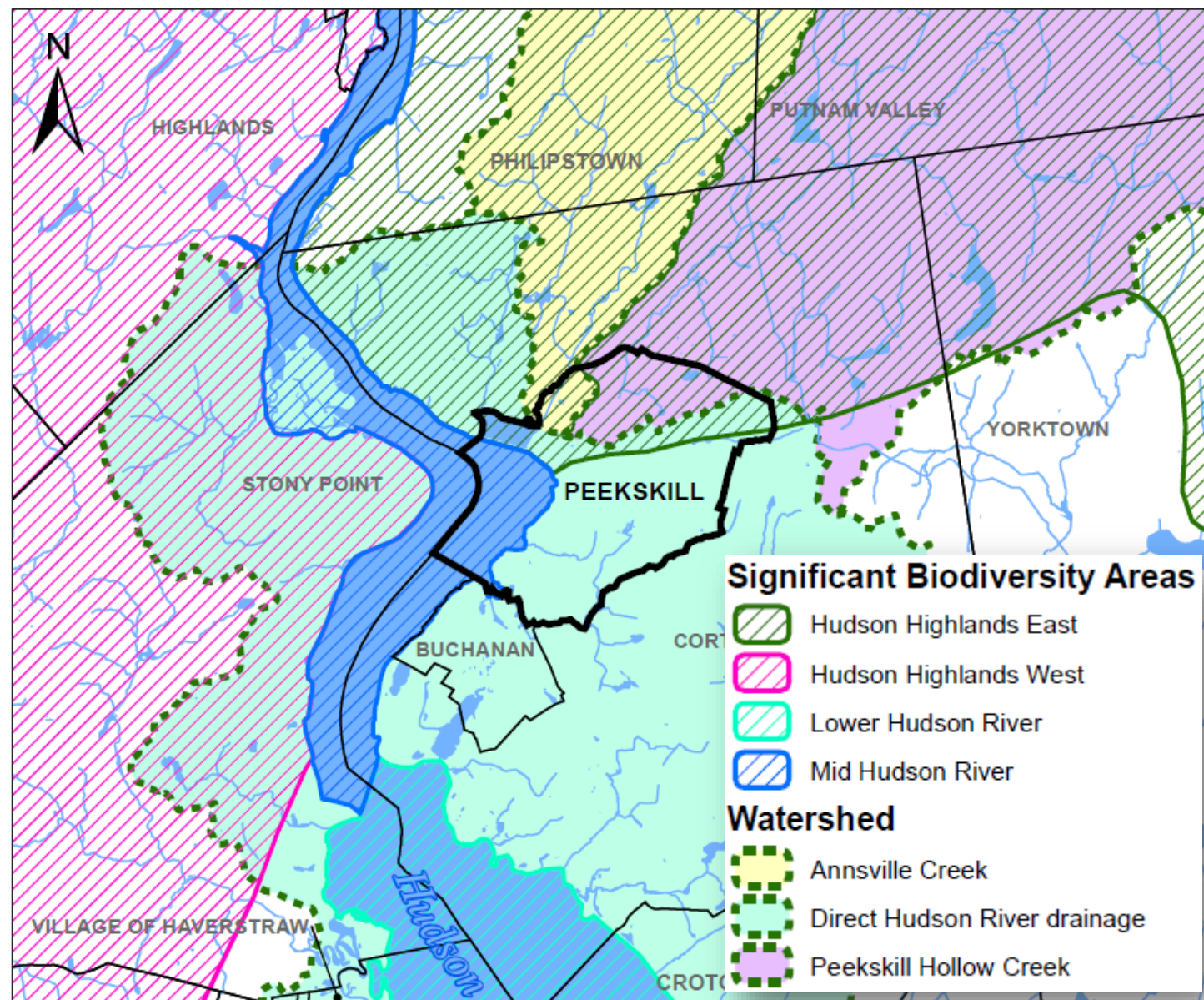
Wildlife Habitats

What animals (birds, fish, mammals) do you see commonly around Peekskill?

[NRI MAPPING HIGHLIGHTS]

Watersheds

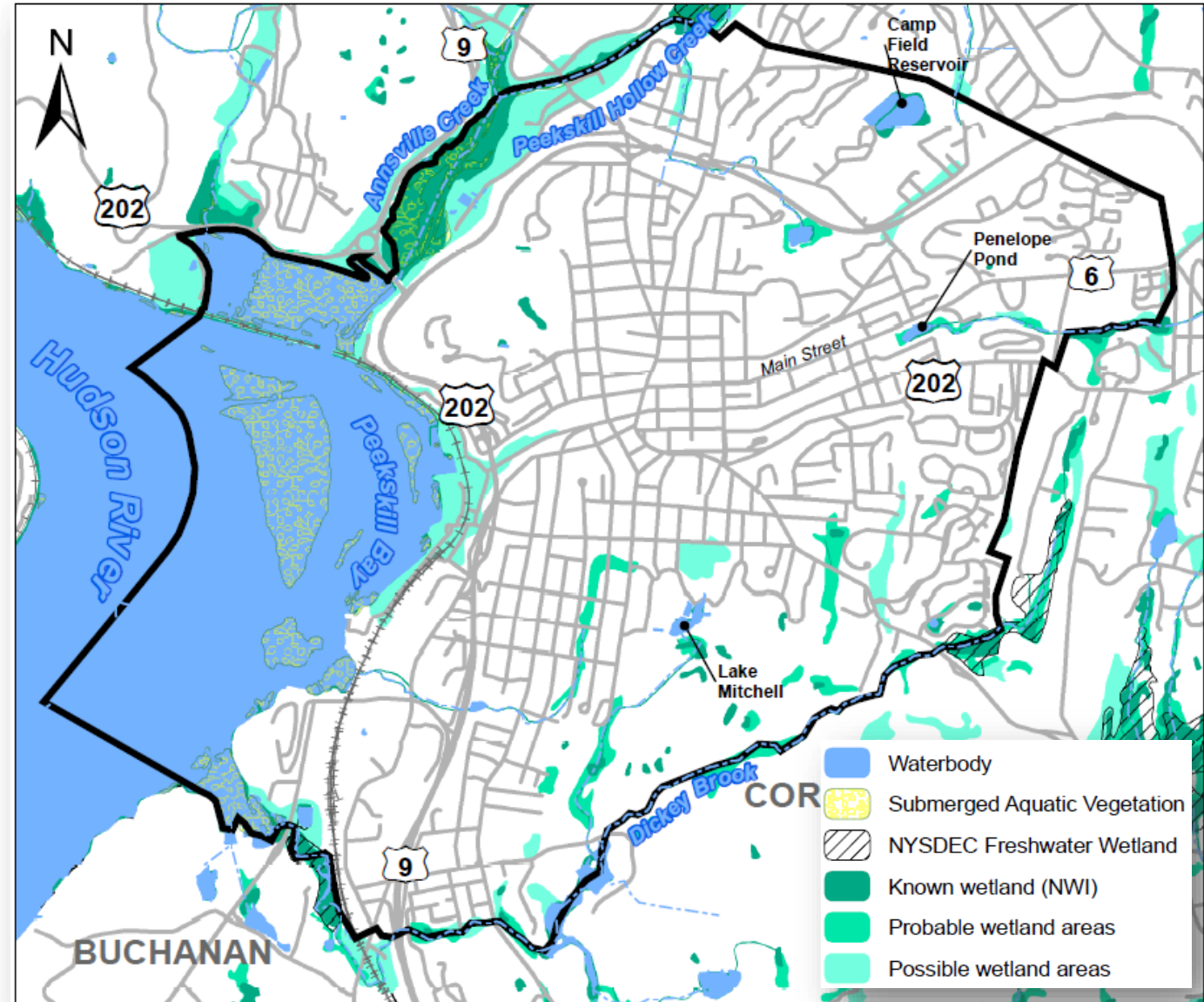
- Primarily Hudson River & Peekskill Hollow Watershed
- Most of City drains directly into the Hudson
- Mid Hudson River & Hudson Highlands Biodiversity Area



[NRI MAPPING HIGHLIGHTS]

Wetlands

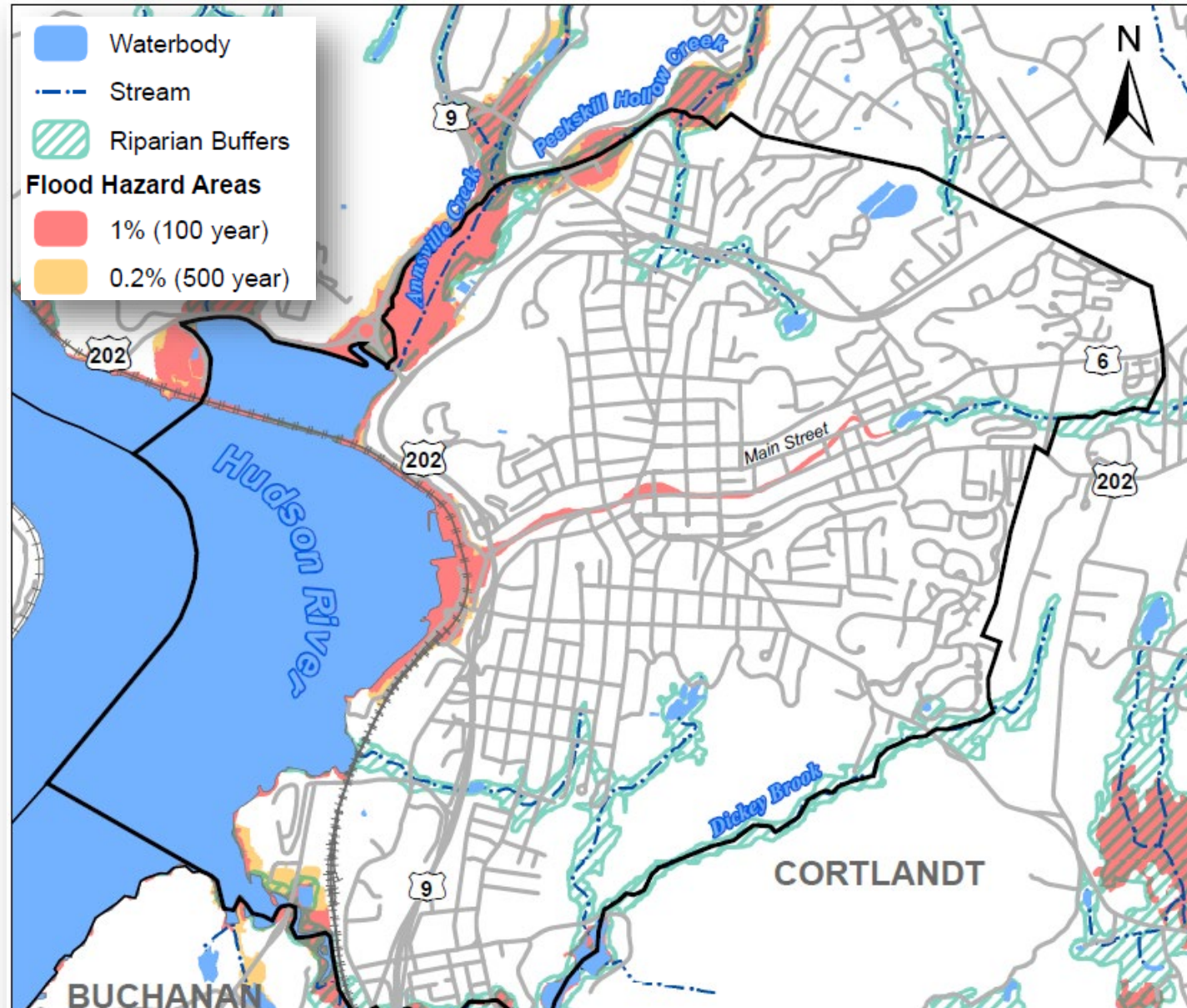
- From NYSDEC Habitat Summary
- 787 Acres known wetlands (22% of City)
 - Federal (NWI)
 - NYSDEC Freshwater
- Probable/possible wetlands (from soil properties)



NRI MAPPING HIGHLIGHTS

Streams & Flood Zones

- Key Rivers & Streams
 - Hudson River
 - Annsville Creek
 - Peekskill Hollow Creek
 - MacGregory Brook
 - Dickey Brook
- 120 Acres of land in City within a 100- or 500-year flood zone (4%)



NRI MAPPING HIGHLIGHTS

Sea Level Rise

- Data from Columbia University Flood Impact Decision Tool
- Provides an estimate of inundation at various scenarios of predicted Sea Level Rise.
- Scenarios mapped compare to the NYSDEC High Projections for Sea Level Rise:
 - 30" (2050s)
 - 58" (2080s)
 - 75" (2100)




NYSDEC Adopted Sea-Level Rise projections for the Lower- Hudson region, 6NYCRR Part 490

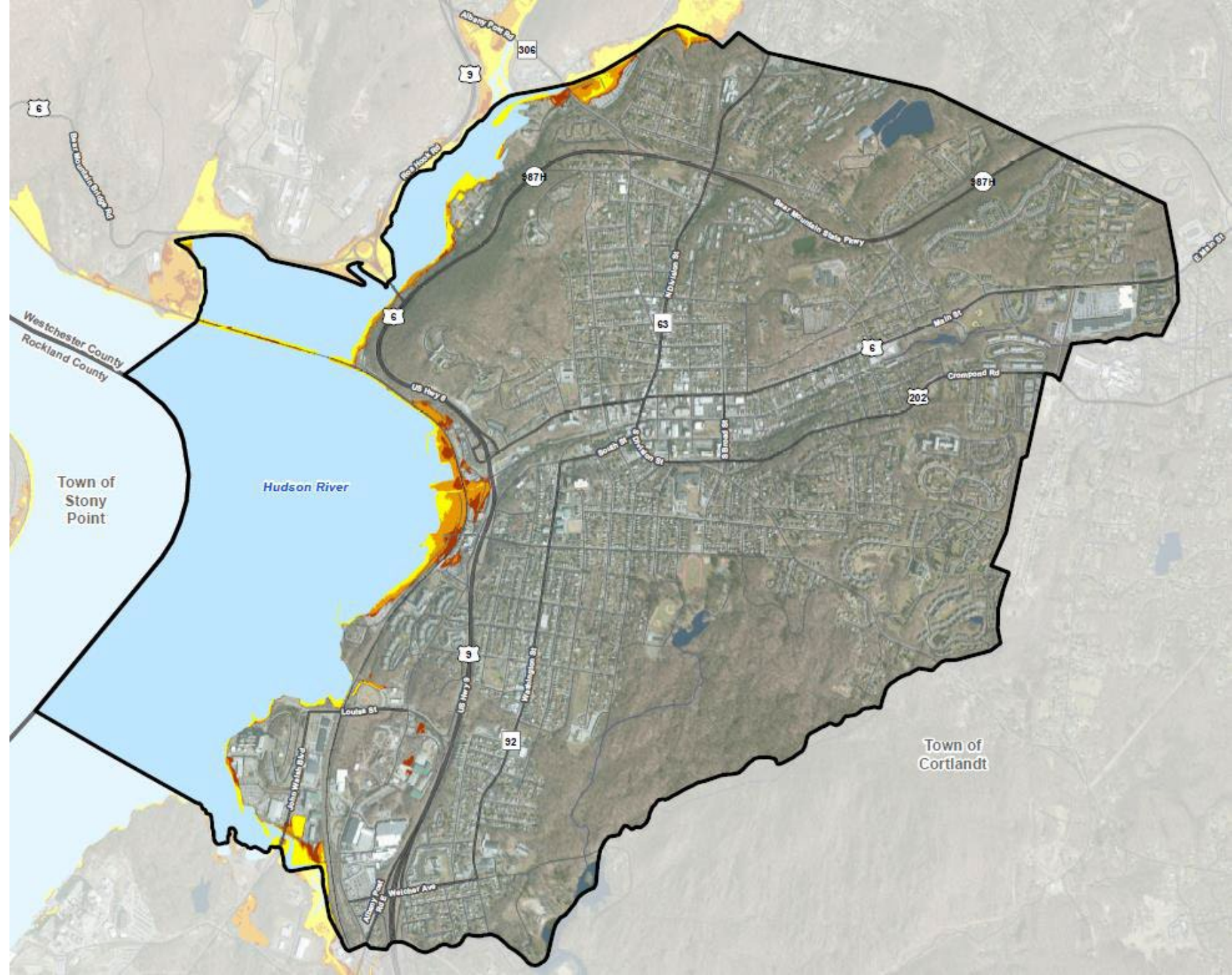
Time Interval	Low Projection	Low-Medium Projection	Medium Projection	High-Medium Projection	High Projection
2020s	2 Inches	4 inches	6 inches	8 inches	10 inches
2050s	8 inches	11 inches	16 inches	21 inches	30 inches
2080s	13 inches	18 inches	29 inches	39 inches	58 inches
2100	15 inches	22 inches	36 inches	50 inches	75 inches

Sea Level Rise

- 29 Acres Inundated at 30" (compare to High Projection for 2050s) – 1%
- 58 Acres Inundated at 60" (compare to High Projection for 2080s) – 2%
- 73 Acres Inundated at 72" (compare to High Projection for 2100) – 3%

Sea Level Inundation




-  Inundation at 30"
-  Inundation at 60"
-  Inundation at 72"

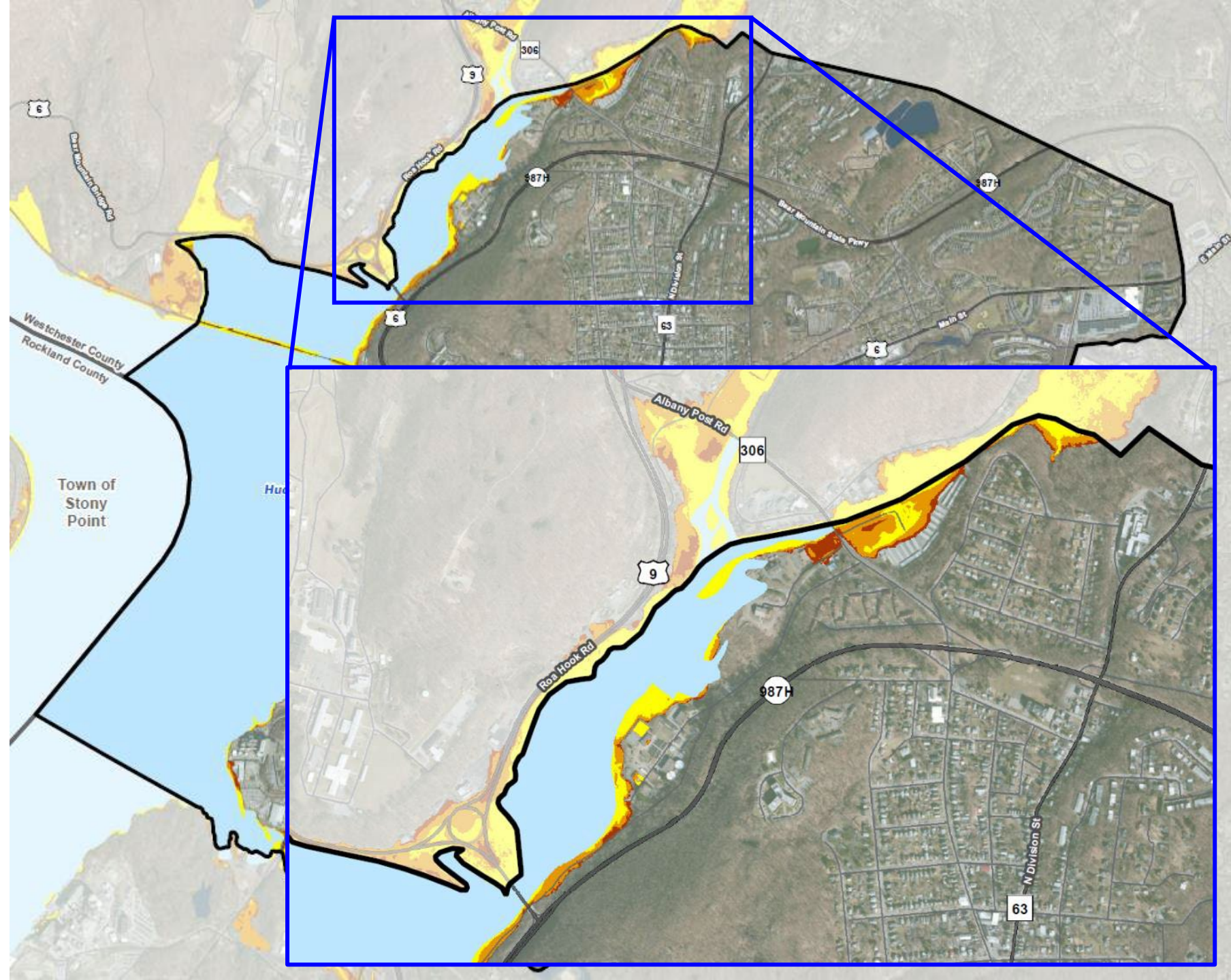


Sea Level Rise

- 29 Acres Inundated at 30" (compare to High Projection for 2050s) – 1%
- 58 Acres Inundated at 60" (compare to High Projection for 2080s) – 2%
- 73 Acres Inundated at 72" (compare to High Projection for 2100) – 3%

Sea Level Inundation




-  Inundation at 30"
-  Inundation at 60"
-  Inundation at 72"

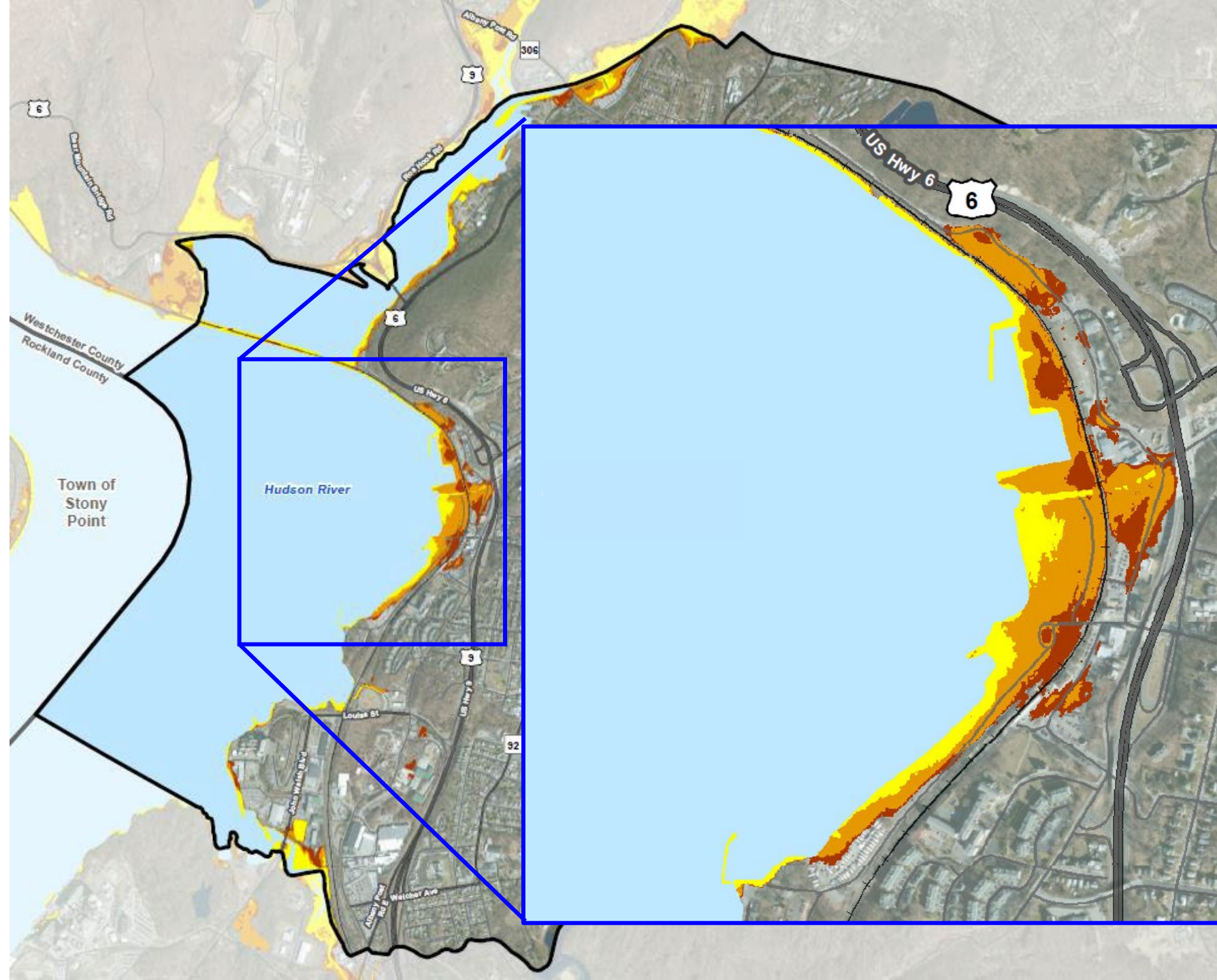


Sea Level Rise

- 29 Acres Inundated at 30" (compare to High Projection for 2050s) – 1%
- 58 Acres Inundated at 60" (compare to High Projection for 2080s) – 2%
- 73 Acres Inundated at 72" (compare to High Projection for 2100) – 3%

Sea Level Inundation




-  Inundation at 30"
-  Inundation at 60"
-  Inundation at 72"

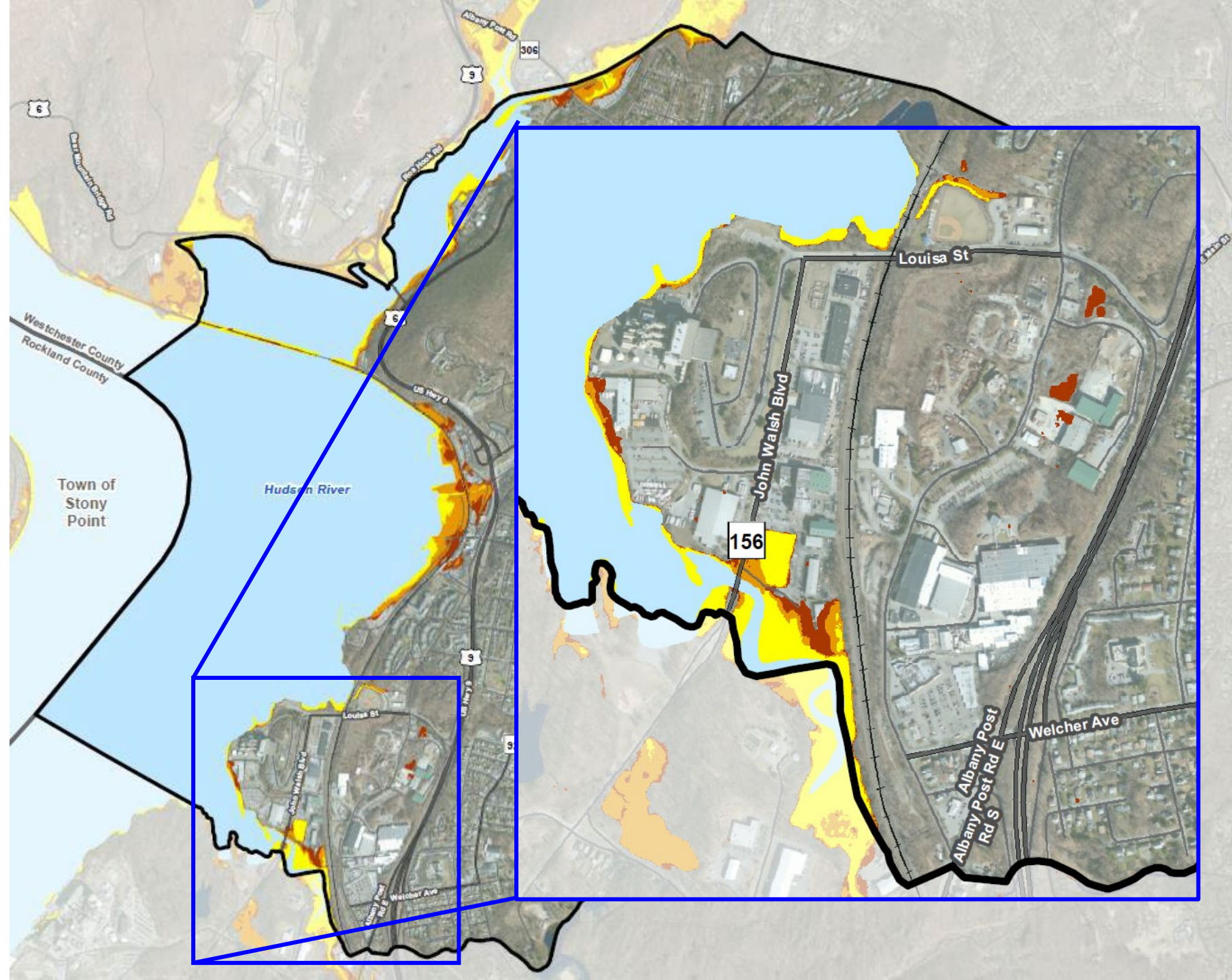


Sea Level Rise

- 29 Acres Inundated at 30" (compare to High Projection for 2050s) – 1%
- 58 Acres Inundated at 60" (compare to High Projection for 2080s) – 2%
- 73 Acres Inundated at 72" (compare to High Projection for 2100) – 3%

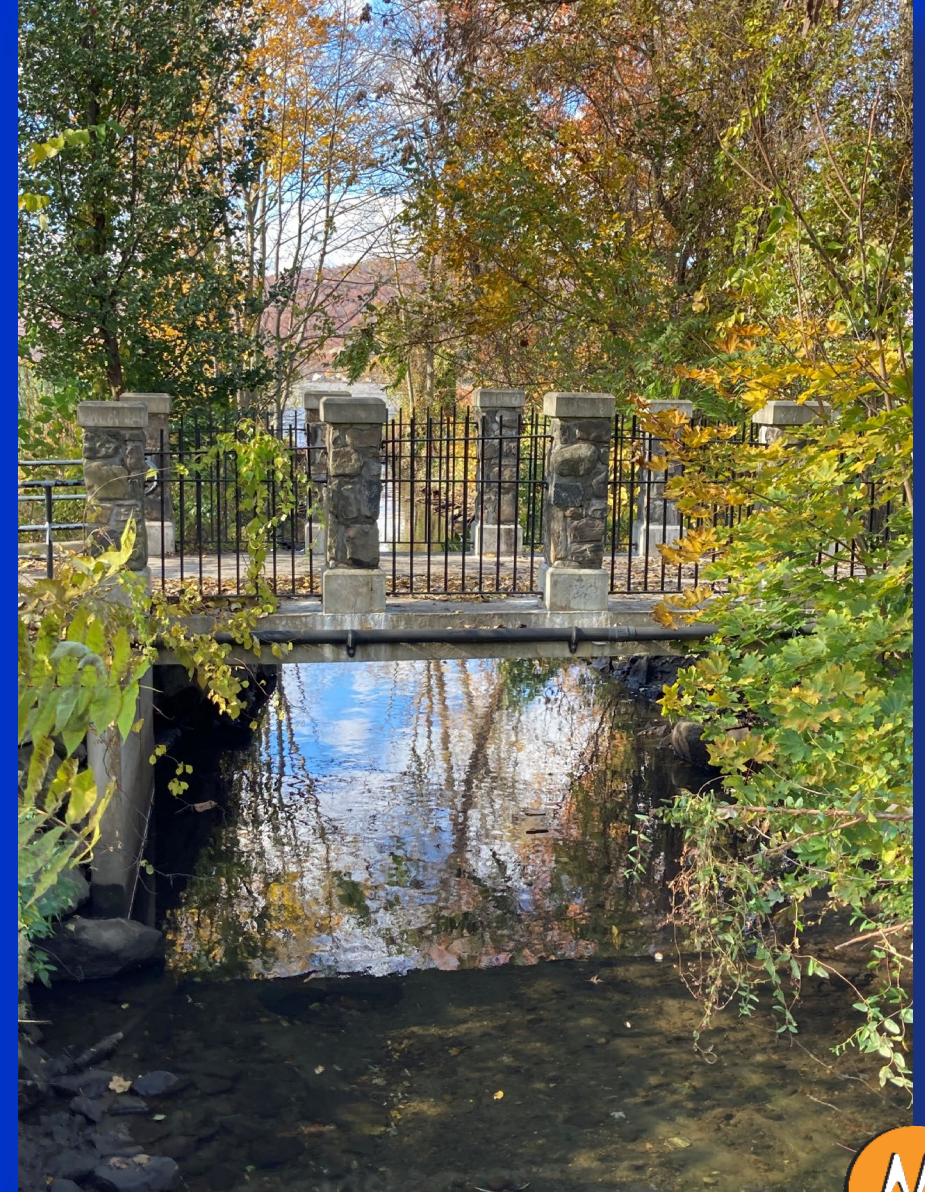
Sea Level Inundation

-  Inundation at 30"
-  Inundation at 60"
-  Inundation at 72"



[PARTICIPANT POLL]

- Please go to pollev.com/mjplanning518
- Text “MJPlanning518” to 37607
- Scan the QR code below



What are the most important water resources to you?

Select all the apply.

Hudson
River

Dickey
Brook

MacGregory
Brook

Annsville
Creek

Wetlands

Lakes

Drinking
Water

What natural resource is closest to your neighborhood? (ex. wetlands, a particular park, a particular stream, etc)

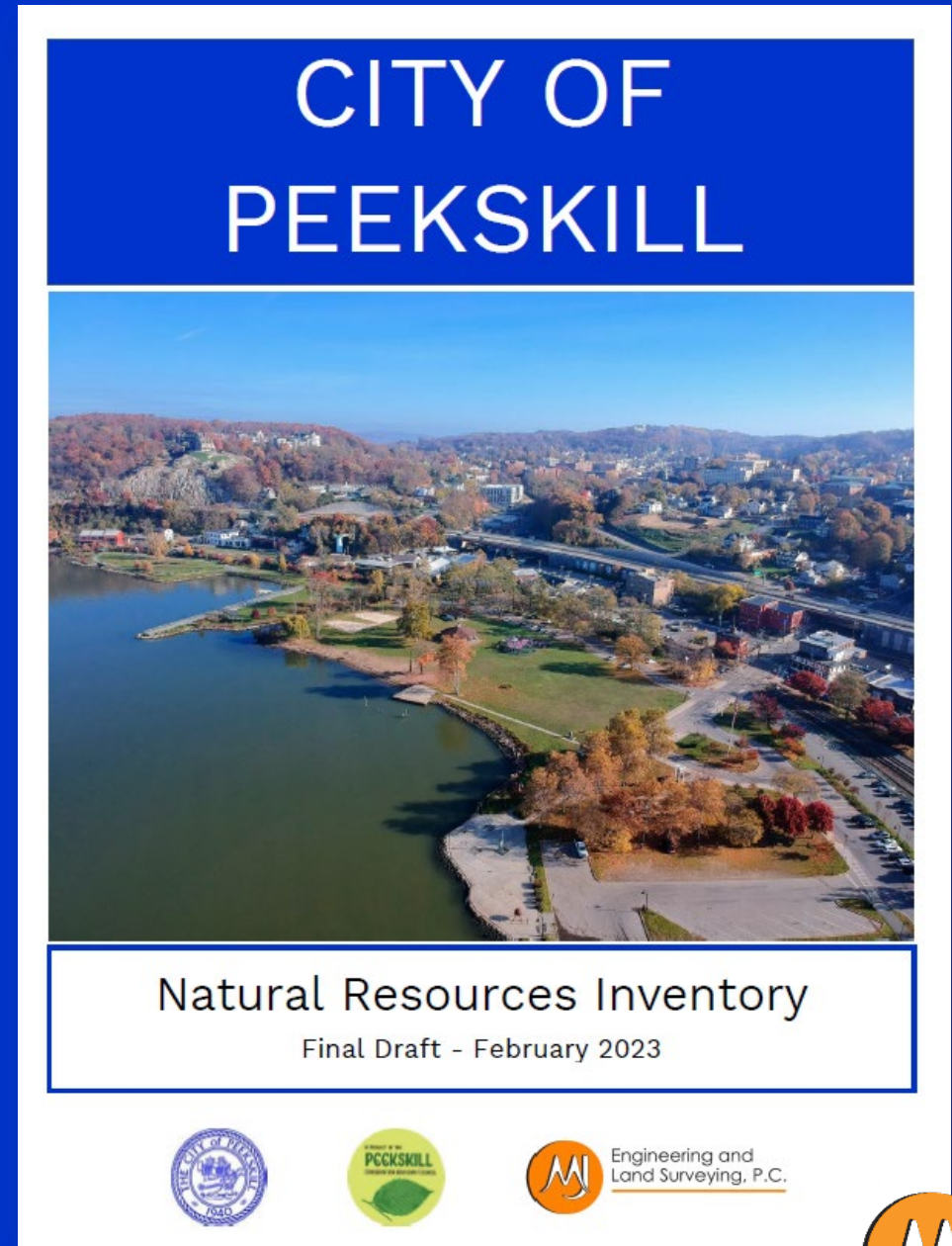
What did you find most interesting about the natural resources presented today?

[NEXT STEPS]

NRI document available on the project website this week:

www.PeekskillNRI.com

Presentation and recording will also be available.

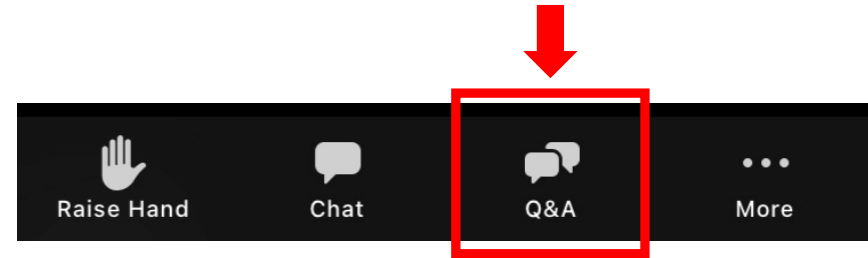




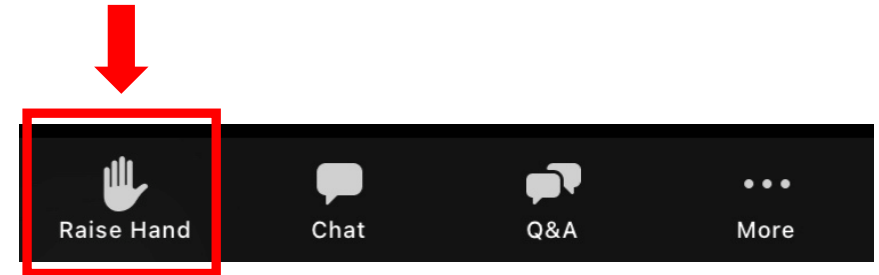
Q & A

[QUESTION & ANSWER SESSION]

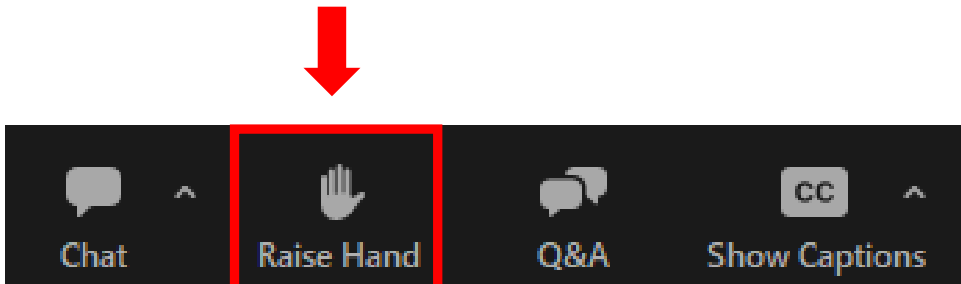
- To post a question, utilize the “Q & A” function in your Zoom Webinar Panel



- “Raise Hand” by mobile device
 - On the left side of your Zoom pane, click on “Raise Hand”



- “Raise Hand” by Computer
 - In the middle of your zoom panel, click “Raise Hand”
 - Or press Alt + Y on your keyboard



- “Raise Hand” by phone
 - Dial *9 to raise hand
 - Dial *6 mute/unmute



A scenic view of a river or lake with reeds and trees under a blue sky with white clouds. The text "THANK YOU" is overlaid in the center.

THANK YOU